

CITY OF SWARTZ CREEK
Park and Recreation Advisory Board
Wednesday, September 1, 2021, 5:30 P.M.
Elms Park
Agenda

1. CALL TO ORDER:
2. ROLL CALL: James Barclay, Sandi Brill, Connie Olger,
Samantha Fountain, Mark Gonyea, George, Hicks, Rae Lynn
Hicks, Steve Long, Trudy Plumb.
3. APPROVAL OF AGENDA:
4. APPROVAL OF MINUTES :
5. MEETING OPEN TO PUBLIC:
6. COMMUNICATIONS TO BOARD:
 - A. August 4, 2021 Minutes
 - B. Staff Letter
 - C. Elms Security Camera Proposal
 - D. Playscape Assessment Letter
 - E. CPTED Primer
 - F. Slip & Slide Feedback
 - G.
7. REPORTS:
 - A. City Manager (trails, pavilion, & disc golf)
 - B. DPW Director (maintenance & electrical extensions)
 - C.
8. BUSINESS:
 - A. Security Cameras
 - B. Playscape Assessment
 - C. Slip & Slide Debriefing
 - D. Crime Prevention Through Environmental Design
 - E.
9. MEETING OPEN TO PUBLIC:
10. BOARD MEMBER COMMENTS:
11. ADJOURNMENT:

CITY OF SWARTZ CREEK
SWARTZ CREEK, MICHIGAN
PARK AND RECREATION ADVISORY BOARD
MINUTES OF REGULAR MEETING
At Abrams Park
August 4, 2021

Meeting called to order at 5:30 p.m. by Chairperson Fountain.

Members Present: Mark Gonyea, James Barclay, Steve Long, Samantha Fountain, Connie Olger, Trudy Plumb.

Members Absent: Sandi Brill, Rae Lynn Hicks, George Hicks.

Staff Present: Adam Zettel, Robert Bincsik.

Others Present: Lania Rocha, Bob Plumb, Nate Henry, Nathan Shue, James Skinner, Jentery B. Farmer, Stacey Farmer, Susan Hagen.

APPROVAL OF AGENDA: Motion by Plumb to approve the amended agenda of August 4, 2021, support by Long.

Unanimous Voice Vote.
Motion Declared Carried.

APPROVAL OF MINUTES: Motion by Plumb to approve minutes of July 7, 2021, support by Long.

Unanimous Voice Vote.
Motion Declared Carried.

MEETING OPEN TO THE PUBLIC: Nate Henry suggested park rentals only be allowed to city residents. Mr. Zettel responded because the park receives state funds that is not an option currently.

COMMUNICATIONS TO THE BOARD:

- A. July 7, 2021 Minutes
- B. Staff Letter
- C. Gate Option
- D. Ordinance and Rules Amendments

REPORTS:

- A. City Manager: Genesee Valley Trail Extension/Safe Routes to School taking longer than we'd like. Introduced and welcomed Rob Bincsik our new Director of Public & Community Services.

BUSINESS:

- A. Disc Golf Update: Mr. Zettel had a good meeting with committee & contractor, Dawes. A build weekend to set up equipment is scheduled for October 16-17 2021 and Shattered Chains is setting up a Go Fund Me account for fundraising.
- B. Mural: Art Gallery members presented a mural, which a grant is paying for. Proposed site for mural is on I-69 westside underpass. Mural was endorsed by board.
- C. Slip and Slide Update: Walt Melen informed the board the Slip & Slide is a go and requested volunteers to be there at 11 a.m. The event is noon-4p.m.
- D. Jentery Farmer Memorial Pavilion Committee: Mr. Zettel met with committee and Nathan Shue, Tri County Construction prior to the park board meeting to review prices and sizes of pavilions. Jentery's family was in attendance at meeting and would like to see the project be done so things could be added in future. Mr. Zettel thinks starting a 20x40 pavilion with option to add electricity, concessions & restrooms in the future. Mr. Gonyea suggested moving pavilion on south west side of Abrams Park to Otterburn. Mr. Shue and some park board members responded that the pavilion there is so old and for the cost for moving it, it is worth purchasing a new one. Mr. Shue remarked for a 20x40 pavilion with slab approx. \$42,000 and if electricity is put in it could cost approximately \$50,000. Jentery's family members now have a goal for fundraising. The city council has already approved \$20,000 for the pavilion.
- E. Elms Park Protocols (gate, cameras, and ordinance): Mr. Zettel recommends a gate at Elms Park, an addition to the ordinance that would make violation of the park rules a misdemeanor and possibly security cameras.

Motion by Barclay, recommendation to council to gate Elms Road Park and amend ordinance, support by Plumb.

Unanimous Voice Vote.
Motion Declared Carried.

MEETING OPEN TO PUBLIC: None.

BOARD MEMBER COMMENTS: Barclay heard good things and disappointing things tonight. Otterburn Park maybe a good place for ATV activity and possibly we will need to put some type of berm or barrier to prevent that. Plumb is excited for the Farmer family.

Motion by Barclay, adjourn the meeting, supported by Plumb.

Unanimous Voice Vote.
Motion Declared Carried.

ADJOURNMENT: Meeting adjourned at 6:56 p.m.

NEXT MEETING: September 1, 2021, 5:30 p.m. at Abrams Park.

Connie Olger, Secretary



Date: August 26, 2021

To: Park Commissioners
From: Adam Zettel, AICP
RE: September 1, 2021 Park Board Meeting

Hello everyone,

We will be meeting at 5:30 p.m. on Wednesday, September 1, 2021. This will be an in-person attendance located at the main pavilion in Elms Park (Kiwanis pavilion with restrooms). The purpose of meeting at Elms Park is to conduct a Crime Prevention Through Environmental Design audit of the park itself. One of our residents, who is a professional planner and the chair of the planning commission, is able to perform this audit. He inquired about others that may wish to attend. I could think of no better captive audience than our park board. As such, for those that wish to join us on the assessment, we plan to start immediately after the meeting.

We will have a bunch of updates on the trails, disc golf, and the pavilion. We also have a lot going on with the playscape at Elms, including the recent staining and potential for mulch installation this summer. That is a good lead-in to the playscape assessment (see the included letter). With the playscape being 30 years old, we are considering the merits of having it professionally reviewed by the installer. The upside is that they are experts in their own facilities. The downside is that they will be motivated to replace or refurbish as much of it as they can.

Another benefit to meeting at Elms this month is the consideration of the security cameras. This is the last part of the 3-point initiative for Elms. (Note that gates are on order and the ordinance has been officially amended). I included a proposal from Sonitrol. I will go over this in detail at the meeting.

Lastly, the slip and slide went well. However, there appears to be a couple items that we can really improve on. I am including some notes from Mr. Henry and have this on the agenda for a quick debriefing.

Contact me with additional future agenda items, questions, or comments.

Sincerely,

A handwritten signature in blue ink that reads "Adam Zettel". The signature is fluid and cursive, with the first name "Adam" and the last name "Zettel" clearly distinguishable.

Adam H. Zettel, AICP
City Manager
City of Swartz Creek
azettel@cityofswartzcreek.org

VISIX 5MP Outdoor Bullet w/ Remote Focus (6-50mm), IR, Audio and Alarm I/O, IP66/IK9 rated, License Plate Capture (LPC)

The VX-5M20-B-RIAL has all the features you might need for nearly any application including: alarm I/O, motion detection, remote focus, license plate capture and compatibility with a wide variety of standardized network protocols. The bullet camera format allows for easy installation in a wide variety of locations. The camera's IP66-rated enclosure provides protection from the elements while its IK9 impact rating makes it vandal resistant.

To truly leverage the incredible value of this camera, owners must take full advantage of its license plate capture capability which can capture plates from 60 feet, at speeds up to 50 MPH. This feature is compatible with the 3xLOGIC VIGIL ANPR (LPC) utility for capturing and identifying license plates, which can be added to "hot" lists configured in the utility. In turn, plates on these lists can be quickly identified and when captured by a camera, they can be configured to trigger an alarm in VIGIL Server. Combined with the VIGIL ANPR utility, the VX-5M20-B-RIAL and its visible light filtering, specialized for plate capture accuracy, offers your clients, customers and employees another layer of protection in traditionally low-security environments such as parking lots and garages.

As a VISIX Gen III solution, the VX-5M20-B-RIAL is interfaced with VIGIL Server, which means aside from VIGIL ANPR, owners can take advantage of other software within our powerful VIGIL Video Management Suite (VMS): Direct access through VIGIL Client and our mobile app View Lite II, as well as health monitoring and notifications using VIGIL Central Management (VCM).



Key Features and Benefits

Resolution	5 MP
Frame Rate	30 fps
Compression	H.264, H.265, MJPEG
Lens	6-50mm Varifocal
Remote Focus	✓
Two-Way Audio	✓
On-Camera Storage	128GB
IR Range	80ft
Weather Resistance	IP66
Impact Resistance	IK9
VIGIL ANPR(LPC)	
Compatibility	✓
Plate Detect Range	60 ft
Plate Detection Speed	50 MPH Max.

Typical Use Cases



**DEALERSHIPS &
RENTAL YARDS**



INDUSTRIAL



**AUTOMOTIVE /
LPC (ANPR)**
Park Board Packet



**MULTI-
TENANT**

What's in the Box

- Template Sheet
- Torx Wrench
- Waterproof Cap & Gasket
- Screws & Anchors
- Test Video Cable

Product Index (/node/773)

VISIX 5MP Outdoor Bullet with Remote Focus (6-50mm) License Plate Capture

VX-5M20-B-RIAL

The VX-5M20-B-RIAL has all the features you might need for nearly any application including: alarm I/O, motion detection, remote focus, license plate capture and compatibility with a wide variety of standardized network protocols. The bullet camera format allows for easy installation in a wide variety of locations. The camera's IP66-rated enclosure provides protection from the elements while its IK9 impact rating makes it vandal resistant.

Request a Demo (/demo)

This website uses cookies to enhance user experience and to analyze performance and traffic on our website. We also share information about your use of our site with our social media, advertising and analytics partners.

**Do Not Share My
Personal
Information**

Accept Cookies

plates on these lists can be quickly identified and when captured by a camera, they can be configured to trigger an alarm in VIGIL Server. Combined with the VIGIL ANPR utility, the VX-5M20-B-RIAL and its visible light filtering, specialized for plate capture accuracy, offers your clients, customers and employees another layer of protection in traditionally low-security environments such as parking lots and garages.

Please refer to spec sheet for country/region ANPR compatibility

Integration

As a VISIX Gen III solution, the VX-5M20-B-RIAL is interfaced with VIGIL Server, which means aside from VIGIL ANPR, owners can take advantage of other software within our powerful VIGIL Video Management Suite (VMS): Direct access through VIGIL Client and our mobile app View Lite II, as well as health monitoring and notifications using VIGIL Central Management (VCM).

Dealer Login (/user/login?destination=/products/visix-5mp-outdoor-bullet-remote-focus-6-50mm-lpc)

To access additional technical materials, please log in

Technical Materials

Sales Materials

This website uses cookies to enhance user experience and to analyze website usage and our site's performance. We also share information about your use of our site with our social media, advertising and analytics partners.

Do Not Share My Personal Information

Download

Accept Cookies

(/media/10156/download)

GEN III Camera Matrix

Park Board Packet

8

September 1, 2021



Sonitrol Great Lakes



Elms Park

Sonitrol provides businesses with a single source of integrated, state-of-the-art security solutions for intrusion, video, access and fire, all backed with professional monitoring by experienced, trained personnel.

Our technology sets us apart. The ability to verify an alarm event in real time gives Sonitrol unrivaled credibility with local law enforcement. That is a key advantage as a growing number of municipalities pass Verified Response regulations requiring verification that an intrusion is actually taking place before police will dispatch personnel to the site.

Sonitrol has the best apprehension rate in the industry—and the fewest dispatches for false alarms. Our integrated components allow us to customize a solution that can expand easily as your needs grow.

Sonitrol offers a full line of security products, all backed by our unique audio/video verification technology. Our ability to hear and see what is actually happening at your site in real time enables us to verify the alarm before we call police.

The bottom line? We prevent loss time after time.

What's more, Sonitrol offers the best performance, satisfaction, and service guarantees in the industry.

**Recognized
Strength & Stability**



Canada

Customer Sites Monitored: 175,000
 Top 100 US Markets Served: 93
 Sales and Service Locations: 200
 24/7 Monitoring Stations: 49

International Company Resources
 Local Attitude

Enclosed in this document is a customized security system proposal for City of Swartz Creek. You will find that it meets all of your operating and security issues utilizing an array of leading edge technology.

Our proposed solution for **video surveillance** is composed of camera and software equipment that provides City of Swartz Creek with flexible monitoring capabilities and accurate, reliable video recording of your premises.

With your approval of this proposal, Sonitrol Great Lakes will begin the process of installing your system according to the timeframes that we discussed. We remain available to you and your staff to answer questions and welcome the opportunity to discuss the proposal in further detail.

#1 in Central Station
Managed Access

- LEADER in Central Station Managed Access Control (*Since 1991*)
 - Managed Access Doors
 - As of 2014

93,050

QTY	Description
2	5mp Outdoor Bullet w/ Remote Focus (License Plate)
1	5MP Dome Camera
3	POE Switch
3	Wall Mount Bracket
1	22x24x24 NEMA 3r, Outdoor/Indoor, Fan-Ventilated E
1	8 Channel NVR w/ 2TB Storage, POE, and Camera Licenses
1	2 TB Hard Drive
1	Customer to provide power, conduit, and pullstring.

Video Surveillance Total	\$7,117.13
Monthly Professional Services Total	\$51.06

PRODUCT AND SERVICE GUARANTEE:

- Phone App for Off-Site Viewing
- 24-Hour Monitoring by Our Internal Central Station
- Lifetime Equipment & Service Warranty
- Loaner Guarantee
- Annual Preventative Maintenance
- HealthCheck
- Software Upgrade Service
- Emergency Service Guarantee
- Lifetime Support & Training
- Lifetime Technical Assistance

Notes:

- The above price does not include applicable taxes, permits or the labor to pull permits if permits are needed.
- The above price is subject to a 50% deposit, with balance due upon completion of installation.
- This proposal is good for 30 days from above date.

	LIFETIME EQUIPMENT & SERVICE WARRANTY	LOANER GUARANTEE	ANNUAL PREVENTATIVE MAINTENANCE VISIT	SOFTWARE UPGRADE SERVICE	EMERGENCY SERVICE GUARANTEE	LIFETIME SUPPORT & TRAINING	LIFETIME TECHNICAL ASSISTANCE
SONITROL	✓	✓	✓	✓	✓	✓	✓
NATIONAL COMPANIES							
TELEPHONE & CABLE COMPANIES							
DO-IT-YOURSELF (DIY)							
SMALL RETAIL PROVIDERS							
IT & ELECTRICAL CONTRACTORS							

***Benefits listed above are only available with enrollment in a monthly service plan

Total Proposal Amount
Monthly Professional Services

\$7,117.13
\$51.06

The above price excludes tax.



Above is a small sampling of clients that use Sonitrol to help protect their business.
We hope to soon add your logo to this list!

Wendy Wakefield
Business Development Professional

wwakefield@sonitrolgreatlakes.com
Phone: (810) 744-4390



10/04/19
Swartz Crek, MI

L&A Playground Assessment Report Description

Playground Assessment Report:

The assessment will be conducted by a Leathers & Associates staff member who is a Certified Playground Safety Inspector (CPSI).

The information this report delivers will be very beneficial to your decision-making ability. We have worked with hundreds of existing clients in providing assessment reports on their existing playgrounds. Together we determine the best option of either moving forward with a renovation or a complete replacement.

The Assessment report will assist you in making decisions about your playground and help answer questions like:

<ul style="list-style-type: none"> • Are there safety concerns • How can we reduce maintenance needs • What’s a replacement cost with today’s materials (all recycled plastics) 	<ul style="list-style-type: none"> • Can the playground be renovated • How much would it cost to renovate • Should the playground be removed and replaced
--	--

Purpose:

- Provide an onsite visit and physical inspection of the playground by an L&A CPSI
- Evaluate the safety conditions relating to the ASTM F1487 standards
- Evaluate accessibility level related to today’s ADA requirements
- Evaluate overall condition of the structure and equipment
- Evaluate the safety surfacing condition
- Issue a summary report of our findings including:
 - General observations & recommendations
 - Safety
 - ADA
 - Listing of all equipment
 - Associated cost
 - Next steps / recommendation

Cost of assessment:

Our assessment reports are \$1800/each. This includes all travel expenses, time on site and the follow up report.

Sincerely,

Marc Leathers
Owner

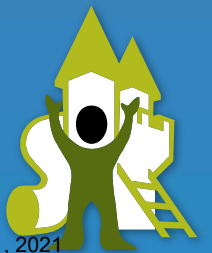
*This service must be requested/approved by the owner of the playground.

*This assessment letter is valid for 6 months.

over **45** YEARS OF CUSTOM DESIGNED + BUILT playgrounds



Playgrounds by
LEATHERS
Dream. Build. Play!





For nearly half a century, **LEATHERS & ASSOCIATES**

has brought to life some of the world's coolest playgrounds!

It all started back in 1971 with Bob Leathers, who imagined a whole new type of playground based on the **ideas + dreams** of kids. He longed to break the mold of traditional, manufactured playgrounds by creating ones that were custom designed, site built and unique to each community.

Over 3,400 playgrounds later, his son, Marc Leathers, and the L&A team continue that mission for a new generation of children.

If you're thinking of building a playground, give us a call! We can help you create a magical space that your community will treasure for decades.



CPTED in Brief

Crime Prevention Through Environmental Design (CPTED) is a multi-disciplinary approach for reducing crime and fear of crime. CPTED strategies aim to reduce victimization, deter offender decisions that precede criminal acts, and build a sense of community among inhabitants so they can gain territorial control of areas to reduce crime opportunities. CPTED uses architecture, urban planning, and facility management and it is sometimes termed Design out Crime (DOC), Defensible Space or Crime Prevention Through Urban Development (CPT-UD). It also addresses the social environment by building a sense of community in areas thereby reducing the motivations for crime. This distinction between crime opportunity and crime motive is where CPTED divides into First and Second Generation (that history is described below). Although First Generation CPTED did not originally provide specific strategies to build social cohesion, well-seasoned practitioners will recognise that the physical environment cannot be divorced from the social environment in which it operates.

CPTED is among the most resilient crime prevention theories of the modern era, primarily because it works so well in practice and because, on the surface, many CPTED solutions appear common sense. However, in practice, implementation of CPTED solutions often lacks a rigorous process of analysis and application which results in simplified and poorly thought-out solutions. Poorly applied CPTED strategies can inadvertently cause harm by excluding some legitimate groups from areas or by displacing crime to other areas. This is why the ICA has been professionalizing the field of CPTED through education, research, certification, and instituting a CPTED Code of Ethics with all its members.

Preface

The CPTED movement first emerged from the urban planning critique of journalist Jane Jacobs' in her book *THE LIFE AND DEATH OF GREAT AMERICAN CITIES* (Jacobs, 1961). Jacobs introduced urban design concepts such as locating people onto public streets, what she called "eyes onto the street", in order to deter offenders from offending with impunity. She also suggested that mixed land uses and other elements of community-building and participation creates a sense of community and enhances the "unconscious network of informal social controls" existing to control crime.

Architect Oscar Newman's book *DEFENSIBLE SPACE* (Newman, 1972), and criminologist C. Ray Jeffery's book *CRIME PREVENTION THROUGH ENVIRONMENTAL DESIGN* (Jeffery, 1971), solidified the CPTED concept in the 1970s and launched the CPTED movement as a way to prevent crime and build sense of community. From the earliest years the CPTED concept included ideas to motivate positive attitudes (later called "motive reinforcement") as well as ideas to reduce physical opportunities for crime (later called "target hardening") (Cozens, 2016). These social and physical dimensions still exist in the CPTED movement today.

FIRST GENERATION CPTED

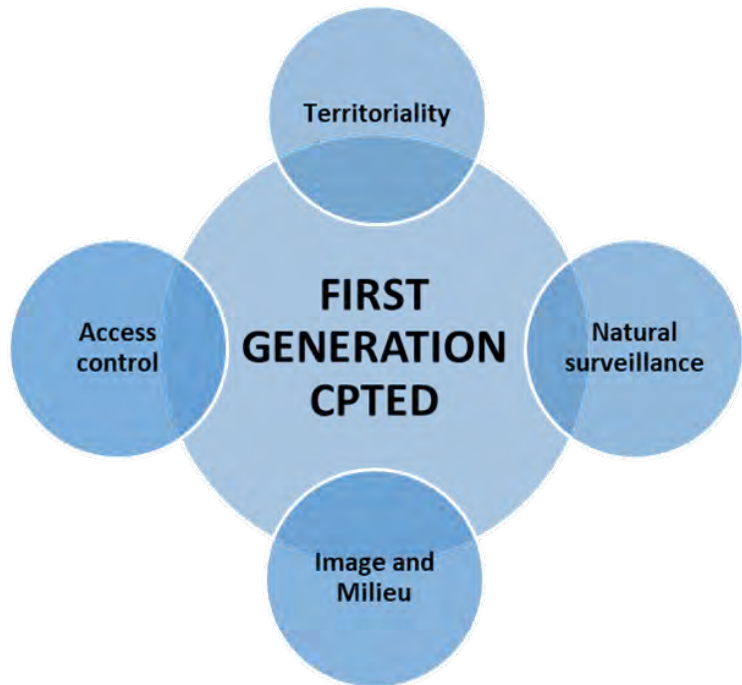
It was Newman's defensible space that held sway in the early years. His concept, now called First Generation CPTED, divides into four principles (Newman, 1972):

Territoriality / Territorial control. Through the design of semi-public spaces in residential areas, or the use of other architectural strategies as outlined below, it is possible to help residents assume informal ownership of public spaces thereby making it difficult for offenders to offend with impunity. When residents see spaces around their homes as their own, they are more likely to take care of those spaces and exert some positive influence over them. Strategically locating safe activities, such as food vendors, also helps establish territorial control of unsafe areas.

Natural surveillance. Closely linked to territorial influence, Newman employed Jacob's eyes-on-the-street and described how to construct places to maximize resident's ability to casually observe semi-public spaces. This is achieved through lighting, landscaping, clear sight-lines, and other design forms that enhance visibility to reduce crime opportunities and lower fear.

Image and Milieu. Newman also felt that the social characteristics of residents was linked to urban safety, such as their perception of nearby areas, whether they were fearful of public areas, and the conditions of nearby land uses. He proposed mini-neighborhoods where residents could better know one another and he cautioned against building residential properties nearby other areas with high crime rates. Linked to the idea of milieu was the concept of image. This was the idea that the physical condition and maintenance of properties signaled that an area was cared-for or neglected, and therefore safer or unsafe. Image programs include graffiti removal, litter clean ups, and beautification.

Access control. Although not subdivided as separate category in Newman's work, access control supported territorial influence by using architectural strategies to limit access into properties. The idea was to help those who had legitimate purpose residing or managing properties to control access into their properties. This included street access controls such as road barriers, to create mini-neighborhoods in residential areas or landscaping to control access into the fronts of buildings.



SECOND GENERATION CPTED

Over the years a number of modifications appeared within CPTED following various experiments and studies, such as the Westinghouse CPTED projects (Westinghouse National Issues Center, 1978) in the 1970s and various urban planning projects in later years. The introduction of target hardening signaled a shift away from the focus on social cohesion and neighborhood renewal toward a focus on physical, crime opportunity-reduction. This was informed, no doubt, by academic studies beginning in the late 1970s and early 1980s about crime and opportunities. "In the seventies, offender-based research started to focus on the rational spatial and environmental choices made by offenders." (van Soomeren, 1996).

New concepts in the geography of crime, known as environmental criminology (Brantingham & Brantingham, 1981), were added to CPTED such as activity generators, crime displacement, and movement predictors. Social descriptions of citizen participation and strengthening community supports were replaced with spatial descriptions of urban locations thereby shifting focus from the residents of an area to offender decision-making.

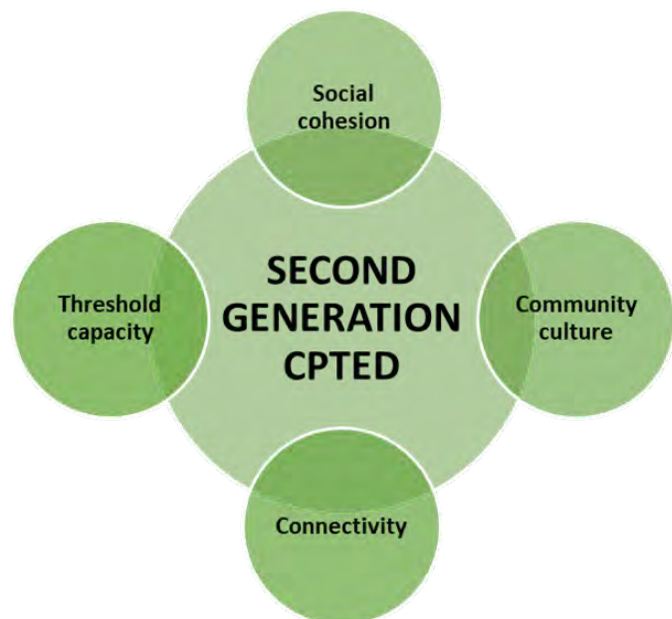
Thus, in 1997, a presentation at the annual conference of the International CPTED Association, introduced the concept of Second Generation CPTED (Cleveland & Saville, 1997). The Second Generation CPTED reintroduced social concepts back into CPTED to redress the imbalance with opportunity reduction in physical places. However, unlike social crime prevention programs of earlier years that focused broadly to large swaths of the community, Second Generation CPTED employed a focus on small-scale environments, what is termed a proximal orientation. It was the proximal orientation that linked Second and First Generation CPTED as one coherent community-building theory.

Second Generation concepts drew from the emerging sociological research on “collective efficacy” and included four principles (Kilburn et al., 2014):

Social cohesion. Cohesion strategies enhance positive social relations between residents, but with a specific focus on solving local problems. Programs include strategies such as Neighbourhood Watch to reduce burglary or social groups interested in quality of life. Social cohesion strategies often involve groups creating action plans to tackle difficult problems. A key element of social cohesion is that social programs are proximal – they are targeted directly within the local neighbourhood, not across the whole city. Additionally, they usually employ 1st Generation CPTED to reinforce the social programming.

Community culture. Community culture programs get people together to create a sense of common purpose. In this case the goal is different from cohesion strategies that work on specific problems. Community culture programs help reinforce 1st Generation CPTED by helping residents create a sense of community and form a strong bond to each other. These connections sometimes relate to cultural events within the neighborhood, art and music festivals, and placemaking activities that get people of all genders, ages, and ethnic backgrounds to get them to know one another.

Connectivity. Internally-focused neighbourhoods sometimes have a tendency to exclude others from the neighbourhood or create exclusionary programs that ignore the wider community. This is known in planning as the “not-in-my-backyard” syndrome (Kilburn et al., 2014) and in recent years First Generation CPTED has been criticized as being exclusionary of some ethnic or income groups (Lee, 2020). Connectivity programs link neighbours with other surrounding neighbourhoods through alliances, formal lines of communication, and other strategies to connect and remain inclusive. Connectivity strategies can be physical (such as linked walkways) or social (such as shared neighbourhood events). As well,



connectivity strategies also link neighbourhoods to other levels of government, for example to obtain government funding grants to create new programs.

Threshold Capacity. The last concept relates to Jacobs initial ideas for creating rich and genuine diversity within the built environment. She believed that land use and demographic diversity was a small scale phenomenon that should appear in all neighbourhoods. The concept of threshold capacity proposes multiple-land uses within the neighbourhood where residents can socialize (parks), shop for groceries (food outlets), and recreate (sports or entertainment). Capacity strategies also guard against land uses that detract from safety in a place, such as too many alcohol-serving establishments or drug-dealing locations, thereby creating land uses with criminogenic conditions (Saville, 1996).

As with all CPTED principles, there are no single strategies that will reduce all crime; they should be applied in combinations based on a thorough analysis of the local context. However, the history of CPTED suggests that comprehensive urban planning and community development requires consideration of all First and Second Generation CPTED principles.

8-17-21

Slip and Slide Feedback

It was fun and I'm glad I stopped by. I ended up staying until the end.

A banner would be nice. It doesn't need to be fancy. I think it's always on a Saturday so maybe one that says, "Giant Slip and Slide Saturday" that can be put up by the dog park early in the week to let people know.

Make a basic flyer. Put it on the City Facebook page, do the same on the Fire Dept's. Maybe the school would post it. Send it out in an email to all city officials and residents on your email list and encourage them to share.

There is a shallow ditch between the pavilions and the hill. The fire truck spews overflow water all day that made its way to the ditch and it was holding enough water to get shoes wet walking across it. A couple 2x10s or a thick rubber mat to place across it for non sliders to walk across would be nice. Or maybe a different location for the truck so the water would take a different route.

A couple poster board size signs to place at the base of the hill saying users must register and sign a waiver before going down would be nice. Nothing fancy is needed. A handmade sign on poster board would be fine. There were several times you had to holler at people to come to the pavilion to register because they started going straight up the hill.

Not enough soap. I think they went through about 7.5 gallons. They had ordered 10 gallons (Two 5 gallon pails) but they didn't arrive and were cancelled.

I brought pool inner tubes. They seemed to be a hit so if we make a flyer maybe we could recommend they bring a towel and a tube if they'd like.

I would estimate there were 40-50 people.

The church was there with food and drink but we can't rely on that every year. I think there should be a plan for drinks at minimum.