

CITY OF SWARTZ CREEK
Park and Recreation Advisory Board
Tuesday, November 15, 2022, 5:30 P.M.
City Council Chambers of City Hall
Agenda

1. CALL TO ORDER:
2. ROLL CALL: James Barclay, Sandi Brill, Connie Olger,
Samantha Fountain, Mark Gonyea, George Hicks, Rae Lynn
Hicks, Krystle Lynch, Trudy Plumb
3. APPROVAL OF AGENDA:
4. APPROVAL OF MINUTES :
5. MEETING OPEN TO PUBLIC:
6. COMMUNICATIONS TO BOARD:
 - A. October 18, 2022 Minutes
 - B. Staff Letter
 - C. Draft Park Plan
7. REPORTS:
 - A. DPW Director & City Manager
 - B.
8. BUSINESS:
 - A. Park Plan Update
 - B.
9. MEETING OPEN TO PUBLIC:
10. BOARD MEMBER COMMENTS:
11. ADJOURNMENT:

**CITY OF SWARTZ CREEK
VIRTUAL PARK AND RECREATION ADVISORY BOARD
ACCESS INSTRUCTIONS
TUESDAY, NOVEMBER 15, 2022 5:30 P.M.**

The **November 15, 2022 Park Board meeting** will commence at 5:30 p.m. and will be conducted virtually (online and/or by phone), due to health concerns surrounding Coronavirus/COVID-19 and rules promulgated by the Michigan Department of Health and Human Services.

To comply with the **Americans with Disabilities Act (ADA)**, any citizen requesting accommodation to attend this meeting, and/or to obtain the notice in alternate formats, please contact Connie Olger, 810-429-2766 48 hours prior to meeting,

Zoom Instructions for Participants

To join the conference by phone:

1. On your phone, dial the teleconferencing number provided below.
2. Enter the **Meeting ID** number (also provided below) when prompted using your touch-tone (DTMF) keypad.

Before a videoconference:

1. You will need a computer, tablet, or smartphone with speaker or headphones. You will have the opportunity to check your audio immediately upon joining a meeting.
2. Details, phone numbers, and links to videoconference or conference call is provide below. The details include a link to **“Join via computer”** as well as phone numbers for a conference call option. It will also include the 9-digit Meeting ID.

To join the videoconference:

1. At the start time of your meeting, enter the link to join via computer. You may be instructed to download the Zoom application.
2. You have an opportunity to test your audio at this point by clicking on “Test Computer Audio.” Once you are satisfied that your audio works, click on “Join audio by computer.”

You may also join a meeting without the link by going to join.zoom.us on any browser and entering the Meeting ID provided below.

If you are having trouble hearing the meeting, you can join via telephone while remaining on the video conference:

1. On your phone, dial the teleconferencing number provided below.
2. Enter the **Meeting ID number** (also provided below) when prompted using your touchtone (DMTF) keypad.
3. If you have already joined the meeting via computer, you will have the option to enter your participant ID to be associated with your computer.

Participant controls in the lower left corner of the Zoom screen:



Using the icons in the lower left corner of the Zoom screen you can:

- Mute/Unmute your microphone (far left)
- Turn on/off camera (“Start/Stop Video”)
- Invite other participants
- View participant list-opens a pop-out screen that includes a “Raise Hand” icon that you may use to raise a virtual hand during Call to the Public
- Change your screen name that is seen in the participant list and video window
- Share your screen

Somewhere (usually upper right corner on your computer screen) on your Zoom screen you will also see a choice to toggle between “speaker” and “gallery” view. “Speaker view” show the active speaker.

Connie Olger is inviting you to a scheduled Zoom meeting.

Topic: City of Swartz Creek Park & Recreation Board Meeting

Time: November 15, 2022 05:30 PM Eastern Time (US and Canada)

Join Zoom Meeting

<https://us02web.zoom.us/j/83096401128>

Meeting ID: 830 9640 1128

One tap mobile

+13017158592,,83096401128# US (Washington DC)

+13126266799,,83096401128# US (Chicago)

Dial by your location

+1 301 715 8592 US (Washington DC)

+1 312 626 6799 US (Chicago)

+1 929 205 6099 US (New York)

+1 253 215 8782 US (Tacoma)

+1 346 248 7799 US (Houston)

+1 669 900 6833 US (San Jose)

Meeting ID: 830 9640 1128

Find your local number: <https://us02web.zoom.us/j/83096401128>

If you have any further questions or concern, please contact 810-429-2766 or email colger@cityofswartzcreek.org. A copy of this notice will be posted at City Hall, 8083 Civic Drive, Swartz Creek, Michigan.

**CITY OF SWARTZ CREEK
VIRTUAL (ELECTRONIC) MEETING RULES AND PROCEDURES**

In order to conduct an effective, open, accessible, and professional meeting, the following protocols shall apply. These protocols are derived from the standard practices of Swartz Creek public meetings, Roberts Rules of Order, and city board & commission procedures. These procedures are adopted to govern participation by staff, councilpersons and members of the public in all City meetings held electronically pursuant to PA 228 of 2020. Note that these protocols do not replace or eliminate established procedures or practices. Their purpose is to augment standing expectations so that practices can be adapted to a virtual meeting format.

The following shall apply to virtual meetings of the city's public bodies that are held in accordance with the Open Meetings Act.

1. Meetings of the City Council, Planning Commission, Zoning Board of Appeals, Downtown Development Authority, Park Board, or committees thereunder may meet electronically or permit electronic participation in such meetings insofar as (1) the Michigan Department of Health and Human Services restricts the number of persons who can gather indoors due to the COVID-19 pandemic; (2) persons have an illness, injury, disability or other health-related condition that poses a risk to the personal health or safety of members of the public or the public body if they were to participate in person; or (3) there is in place a statewide or local state of emergency or state of disaster declared pursuant to law or charter by the governor or other person authorized to declare a state of emergency or disaster.
2. All meetings held hereunder must provide for two-way communication so that members of the public body can hear and respond to members of the general public, and vice versa.
3. Members of the public body who participate remotely must announce at the outset of the meeting that he/she is in fact attending the meeting remotely and by further identifying the specific physical location (by county, township, village and state) where he/she is located. The meeting minutes must include this information.
4. Notice of any meeting held electronically must be posted at the City Offices at least 18 hours before the meeting begins and must clearly explain the following:
 - (a) why the public body is meeting electronically;
 - (b) how members of the public may participate in the meeting electronically, including the specific telephone number, internet address or similar log-in information needed to participate in the meeting;

- (c) how members of the public may contact members of the public body to provide input or ask questions on any business that will come before the public body at the meeting;
 - (d) how persons with disabilities may participate in the meeting.
5. The notice identified above must also be posted on the City's website homepage or on a separate webpage dedicated to public notices for non-regularly scheduled or electronic public meetings that is accessible through a prominent and conspicuous link on the website's homepage that clearly describes the meeting's purpose.
 6. The City must also post on the City website an agenda of the meeting at least 2 hours before the meeting begins.
 7. Members of the public may offer comment only when the Chair recognizes them and under rules established by the City.
 8. Members of the public who participate in a meeting held electronically may be excluded from participation in a closed session that is convened and held in compliance with the Open Meetings Act.

MAINTAINING ORDER

Public body members and all individuals participating shall preserve order and shall do nothing to interrupt or delay the proceedings of public body.

All speakers shall identify themselves prior to each comment that follows another speaker, and they shall also indicate termination of their comment. For example, "Adam Zettel speaking. There were no new water main breaks to report last month. That is all."

Any participants found to disrupt a meeting shall be promptly removed by the city clerk or by order of the Mayor. Profanity in visual or auditory form is prohibited.

The public body members, participating staff, and recognized staff/consultants/presenters shall be the only participants not muted by default. All other members must request to speak by raising their digital hand on the Zoom application or by dialing *9 on their phone.

MOTIONS & RESOLUTIONS

All Motions and Resolutions, whenever possible, shall be pre-written and in the positive, meaning yes is approved and no is defeated. All motions shall require support. A public body member whom reads/moves for a motion may oppose, argue against or vote no on the motion.

PUBLIC ADDRESS OF BOARD OR Commission

The public shall be allowed to address a public body under the following conditions:

1. Each person who wishes to address the public body will be first recognized by the Mayor or Chair and requested to state his / her name and address. This applies to staff, petitioners, consultants, and similar participants.
2. Individuals shall seek to be recognized by raising their digital hand as appropriate on the digital application.
3. Petitioners are encouraged to appropriately identify their digital presence so they can be easily recognized during business. If you intend to call in only, please notify the clerk in advance of your phone number.
4. The city clerk shall unmute participants and the members of the public based upon the direction of the mayor or chair. Participants not recognized for this purpose shall be muted by default, including staff, petitioners, and consultants.
5. Individuals shall be allowed five (5) minutes to address the public body, unless special permission is otherwise requested and granted by the Mayor or Chair.
6. There shall be no questioning of speakers by the audience; however, the public body, upon recognition of the Mayor or Chair, may question the speaker.
7. No one shall be allowed to address the public body more than once unless special permission is requested, and granted by the Mayor or Chair.
8. One spokesperson for a group attending together will be allowed five (5) minutes to address the public body unless special permission has been requested, and granted by the Mayor or Chair.
9. Those addressing the public body shall refrain from being repetitive of information already presented.
10. All comments and / or questions shall be directed to and through the Mayor or Chair.
11. Public comments (those not on the agenda as speakers, petitioners, staff, and consultants) are reserved for the two "Public Comment" sections of the agenda and public hearings.

VOTING RECORD OF PUBLIC BODIES

All motions, ordinances, and resolutions shall be taken by "YES" and "NO" voice vote and the vote of each member entered upon the journal.

CITY OF SWARTZ CREEK
SWARTZ CREEK, MICHIGAN
PARK AND RECREATION ADVISORY BOARD
MINUTES OF REGULAR MEETING
PAUL D. BUECHE MUNICIPAL BUILDING
OCTOBER 18, 2022

Meeting called to order at 5:31 p.m. by Chairperson Barclay

Members Present: Mark Gonyea, Jim Barclay, Rae Lynn Hicks, George Hicks, Samantha Fountain, Connie Olger.

Members Absent: Sandi Brill, Krystle Lynch, Trudy Plumb.

Staff Present: Adam Zettel, Rob Bincsik.

Others Present: Nate Henry, Rebecca Bosas, David Krueger, Lania Rocha.

Virtually Present: None.

APPROVAL OF AGENDA: Motion by Fountain to approve the agenda as of October 18, 2022, support by Gonyea

Unanimous Voice Vote.
Motion Declared Carried.

APPROVAL OF MINUTES: Motion by Fountain to approve minutes as printed of September 20, 2022, support by R. Hicks.

Unanimous Voice Vote.
Motion Declared Carried.

MEETING OPEN TO THE PUBLIC: Rebecca Bosas 4061 Elms Road, also city DPW worker describe continuous issues at Elms Park. As a resident and an employee, she has witnessed issues with loud music, excessive waste, alcoholic beverages, parking on grass, destruction in the restrooms. She feels we need more police presence, earlier closing time, holding of deposit and increasing rental fees.

COMMUNICATIONS TO THE BOARD:

- A. September 20, 2022, Minutes
- B. Staff Letter
- C. Draft Park Rules, Reservation Form & User Agreement

REPORTS:

- A. DPW Director & City Manager: Adam Zettel update on the trail and issues with GM and the railroad crossing. Group from Flint Township would like a group of Swartz Creek residents/council to join them with a formal grand opening of the trail next spring.

Councilmember Hicks said a kid's bike parade would be a great idea to have that day. Mr. Zettel stated that we are still working on SRTS easement issue with the Kincaid family. We are also working on parking issues at Elms Road Park. Mr. Bincsik commented that the park restrooms will be closed soon due to temps dropping. He finally got a response from the company regarding the tennis courts but not the quote, he is still waiting for that.

BUSINESS:

- A. 2023 Park Rules and Reservation Form: Mr. Zettel review the changes he already made from our request at last meeting such as no inflatables allowed, no amplified music, 18 years of age to reserve, extended time frame for residents only to reserve from January to January & February, rental fees changed for residents and nonresidents rates have been added and capacity of each pavilion changed and the addition of the rental agreement form. He suggested some additional changes such as park closing time changed from 10 pm to dusk.

Motion by Barclay to change the park rules as written in the packet with the exception of changing the park closing hours from 8:00 a.m. - 10 p.m. to 8:00 a.m. to dusk, support by Fountain.

Yes: R. Hicks, G. Hicks, Fountain, Olger, Gonyea, Barclay.

No: None. Motion Carried.

Several things were suggested to add to the reservation form such as: the security deposit be raised, recommended renter taking before and after pictures. Resident & Non Resident fees now, the Boardmember Barclay requested a police officer attend the next meeting to get his views on the park rules.

Motion by Barclay to raise the deposit to \$200 and decrease resident fees by \$20 on all pavilion at Elms & Abrams Parks in reference to the reservation form in the packet , support by Gonyea.

Yes: R. Hicks, G. Hicks, Fountain, Olger, Gonyea, Barclay.

No: None.

Motion by Barclay to adopt rental agreement as written in the packet with the exception of #10 changed- To vacate and cleanup prior to closing (Dusk) and recommend pictures of reserved pavilion before and after cleanup by users, support by R. Hicks

Yes: Olger, Gonyea, Barclay, R. Hicks, G. Hicks, Fountain.

No: None.

- B. Park Plan Update: Mr. Zettel reviewed park plan contents in the packet and asked the board to review for future discussion at next meeting.

MEETING OPEN TO PUBLIC: David Krueger 7399 Miller Road thanked the park board for the changing of meeting time/day, so he is now able to attend. He reminded everyone that the city parks belong to the residents, taxpayers. Our parks are city parks not county parks not regional parks. He feels the people who abuse the parks should be held responsible. He suggests park closing time be sunset.

Nate Henry 5411 Don Shenk thinks taking pictures of proof at pavilions could have issues, suggestions to changes on reservation form regarding ball diamonds, and seating capacity, and restroom listed separately.

BOARD MEMBER COMMENTS: Boardmember Gonyea thinks we had a good meeting tonight accomplished a lot, good job everybody, Boardmember George Hicks agreed it was a good meeting. Boardmember Rae Lynn Hicks noticed Agroscaping was out working around city hall working. She is glad we got the rules worked out. Boardmember Fountain agrees it was a good meeting and we got things accomplished in a timely manner and great to see the mayor attending tonight. Boardmember Barclay agrees it was a good meeting also, glad to get it done. Appreciate all the city employees and elected officials here tonight. Encouraged everyone to go look at the parks.

Motion by Gonyea, adjourn the meeting, supported by G. Hicks.

Unanimous Voice Vote.

Motion Declared Carried.

ADJOURNMENT: Meeting adjourned at 6:46 p.m.

NEXT MEETING: November 15, 2022, 5:30 p.m.

Connie Olger, Secretary



Adam Zettel, AICP

City Manager

azettel@cityofswartzcreek.org

Date: November 10, 2022

To: Park Commissioners
From: Adam Zettel, AICP
RE: November 15, 2022 Park Board Meeting

Hello everyone,

We will be meeting at 5:30 p.m. on Tuesday, November 15, 2022. REMINDER: Regular meetings of the park board will now be on the 3rd Tuesday of the month. The time is still 5:30 p.m., and regular meetings will still be at city hall.

By the time you get this, the parks will be closed up for the season and the final park reservation forms/rates will be in place. In addition, staff will be working on signs for Elms Park, a modified parking/traffic layout as discussed, and submission of a SPARK grant for Otterburn Park.

For our meeting, we have a serviceable draft of the park plan. We have spent some time in the prior months analyzing current issues, conducting public outreach, and assessing our goals and objectives. Combined with our knowledge of park needs and previous tasks, Rowe has been able to compile a complete document for review. I expect to have Blake in attendance to go over this with us and direct us on the next steps.

Contact me with additional future agenda items, questions, or comments.

Sincerely,

Adam H. Zettel, AICP
City Manager
City of Swartz Creek
azettel@cityofswartzcreek.org

8083 Civic Drive

Swartz Creek Michigan 48473

Phone: (810)-635-4464

Fax: (810)-635-2887

www.cityofswartzcreek.org

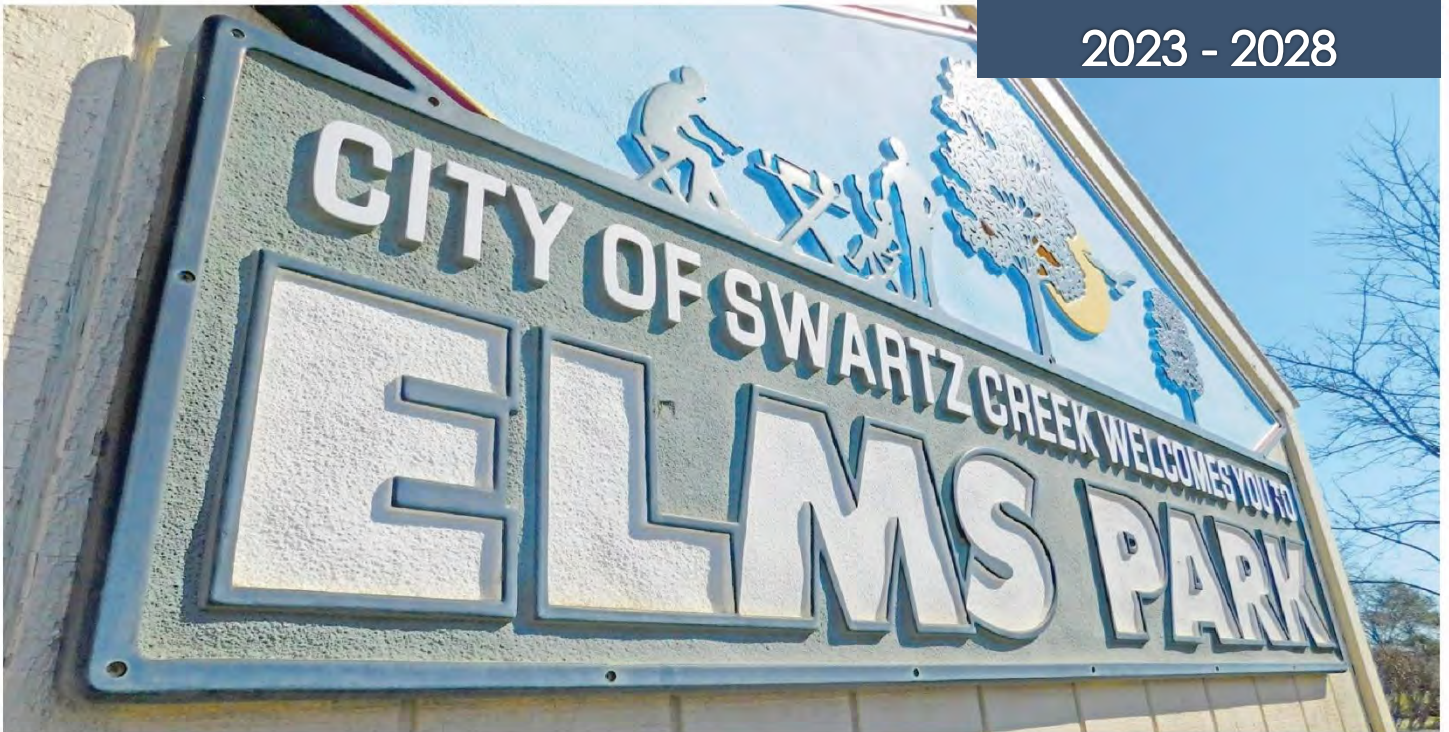
<ftp://cityofswartzcreek.org>



CITY OF SWARTZ CREEK

FIVE YEAR PARKS AND RECREATION PLAN

2023 - 2028



Prepared by **ROWE Professional Services Company**

540 S. Saginaw Street Suite 200, Flint, MI 48502 | (810) 341-7500



Table of Contents

BACKGROUND 1

COMMUNITY DESCRIPTION 2

 Physical Characteristics..... 2

 Location..... 2

 Transportation..... 2

 Soils 2

 Topography 2

 Water Resources..... 2

 Vegetation, Fish, and Wildlife..... 2

 Climate 3

SOCIOECONOMIC CHARACTERISTICS 3

 Population, Growth, and Income 3

ADMINISTRATIVE STRUCTURE 4

 Flow Chart 4

RECREATION INVENTORY 4

 Status of Grant Funded Facilities..... 7

 Non-Motorized Plan 7

BARRIER-FREE COMPLIANCE AND PARK CONDITIONS..... 12

 Elms Park..... 12

 Evaluation of Existing Facilities (2) 12

 Transition and Implementation Plan..... 13

 AbramsPark (2)..... 14

 Evaluation of Existing Facilities 14

 Transition and Implementation Plan..... 15

 Bicentennial Park (3) 16

 Evaluation of Existing Facilities 16

 Transition and Implementation Plan..... 16

 Veterans Memorial Park (4) 16

DESCRIPTION OF PLANNING PROCESS..... 17

GOALS AND OBJECTIVES 17

 Goal 1: Pursue grants and develop partnerships and advocates to serve park needs 18

 Goal 2: Enhance use of existing park facilities and programs..... 18

 Goal 3: Pursue non-motorized trail system 18

 Goal 4: Regularly review maintenance practices and policies for park facilities and update when necessary 19

 Goal 5: Pursue new park development and acquisition that support the goals and objectives within the recreation plan..... 19

ACTION PLAN 20

 Short-Term Projects..... 20

Mid-Term Projects	20
Long-Term Projects	20
Develop Non-Motorized Trail	20
Extend Non-Motorized Trail to Elms Road Elementary School.....	20
Extend Non-Motorized Trail to Swartz Creek Middle School.....	22
Maintain Open Space	22
Improve Existing Playground Equipment	22
Bicentennial Park	23
Administration	23
CAPITAL IMPROVEMENT PLAN	24
POTENTIAL GRANT SOURCES	28
Federal and State Grants	28
Other Local Funds	29
Other Sources of Funding	29
Partnering/Advocates.....	30
APPENDIX	27

Tables

Table 1: Swartz Creek Recreation Inventory.....	5
Table 2: Regional Recreational Facilities.....	11

Maps

Map 1: Park Location Map.....	8
Map 2: Trail Master Plan Map	10
Map 3: Elms Park Drawing	24
Map 4: Abrams Park Drawing.....	25

BACKGROUND

This Five-Year Parks and Recreation Plan was prepared with assistance from ROWE Professional Services Company and with guidance from the City of Swartz Creek Parks and Recreation Advisory Board consisting of:

James Barclay
Sandi Brill
Mark Gonyea
Connie Olger
Samantha Fountain

Rae Lynn Hicks
George Hicks
Krystle Lynch
Trudy Plumb

Adam Zettel (City Manager) and Robert Bincsik (Director of Public and Community Services) serves as the liaison to the city. The committee provides the evaluation and decisions for future park improvements, development, land acquisition or other issues regarding recreation opportunities.

This plan is an update of the 2022 Parks and Recreation Plan and is in accordance with Michigan Department of Natural Resources (MDNR) requirements as stated in the "Guidelines for the Development of Community Park, Recreation, Open Space and Greenway Plans". This document will allow for the pursuit of MDNR grants, as well as establish a basis for other funding opportunities. This plan is valid for five years from the date of resolution of adoption.

Successful projects that have been accomplished include:

- Securing a \$45,000 Recreation Passport Grant from the Michigan Department of Natural Resources for improvements to the Elms Park bathrooms, addition of an internal pathway, accessible parking, and exercise stations
- Maintenance and staining of the Elms Park play structure
- Addition of new playground equipment at Elms Park
- Update to the non-motorized transportation plan
- Extensive clean up and beautification by volunteers
- New Disc Golf Course at Abrams Park

COMMUNITY DESCRIPTION

Physical Characteristics

Location

The City of Swartz Creek is in Genesee County, which is in the southeastern half of the Lower Peninsula. The City of Swartz Creek lies approximately 5 miles southwest of Flint.

Transportation

The city is divided in half by Interstate 69 which runs east and west. Interstate 75, one of the nation's major north-south interstate highways, intersects I-69 approximately 2 miles east of the city. Bishop International Airport is in the City of Flint, approximately ½ mile east of Swartz Creek. The nearest passenger rail stops are in Durand and Flint. The MTA also operates a regional bus system.

Soils

The Soil Conservation Service Soil Survey of Genesee County indicates that most of soils for the City of Swartz Creek are nearly level to gently sloping consisting of poorly drained and somewhat poorly drained loams with a clay loam subsoil. The major concern of these soil types is their wetness. Due to this factor, these soils may limit building development. The soil characteristics of a site should determine to a significant extent the type of recreational activities that would be appropriate as well as cost effectiveness (USDA, Soil Conservation Service Soil Survey for Genesee County, 1972).

Topography

The topography of the city ranges from nearly level to gently sloping, rising to low hills in places and includes floodplains.

Water Resources

The primary body of water in the area is Swartz Creek, which flows into the city from the west and flows east and northeast through the city until it reaches the Flint River.

Vegetation, Fish, and Wildlife

Tree species native to the city include elm, ash, sugar maple, oak, tamarack, and aspen. Native wildlife includes open-land wildlife such as sparrows, hawks, rabbits, woodchucks, and field mice. Woodland wildlife includes owls, woodpeckers, squirrels, raccoons, and white-tailed deer. Wetland wildlife includes ducks, geese, and killdeer. Wildlife is limited, and few native woodlots remain within the city limits due to development.

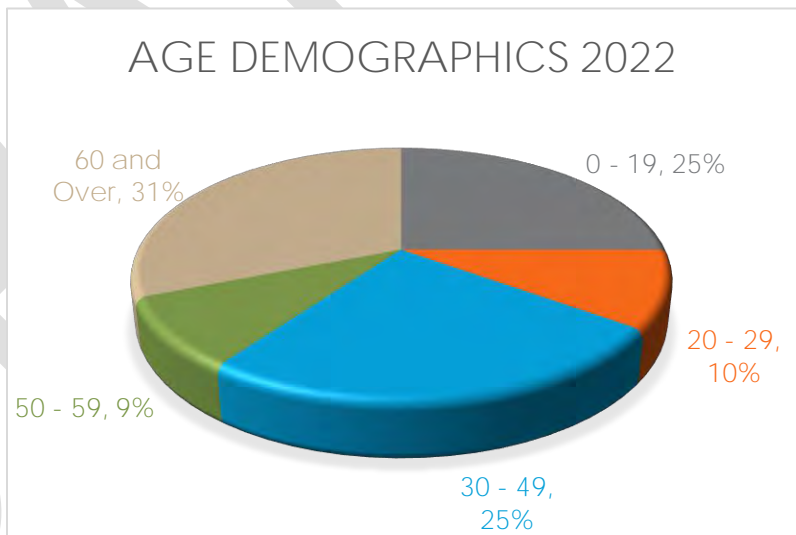
Climate

Genesee County is in southeastern Michigan, where the lake effect is not as great as it is in most other sections of the state. The soil survey for Genesee County, Michigan contains weather data for the City of Flint for the period 1937 to 1966. The data shows the temperature was 0 degrees Fahrenheit or below an average of six days in winter and 90 degrees Fahrenheit or higher an average of 14 days in summer. Average annual precipitation was 29.58 inches. Snowfall averaged 40.5 inches per year but varied considerably from year to year. There was an average of 39 days per year with snow cover, the average depth of the snow on days with snow cover being 5.0 inches.

SOCIOECONOMIC CHARACTERISTICS

Population, Growth, and Income

Between 1980 and 1990, the City of Swartz Creek as well as Genesee County experienced a decrease in population which is somewhat consistent with the slowing growth trend within the state. During this time frame, there was a migration shift from the more urban areas to the surrounding rural townships. However, between 1990 and 2000, Swartz Creek showed a population rebound to pass 1980s population. From 2000 to 2010, the city grew by 656 and from 2010 to 2020, the population increased by 139. Its current population is estimated at 5,897. The median household income and home value is slightly behind the state average (\$52,669). There is a well-balanced age diversity which indicates a need for all age groups in the community. The median age of residents in Swartz Creek is 40.7; the state average is 39.8 and the Flint Metropolitan Area is 40.5.



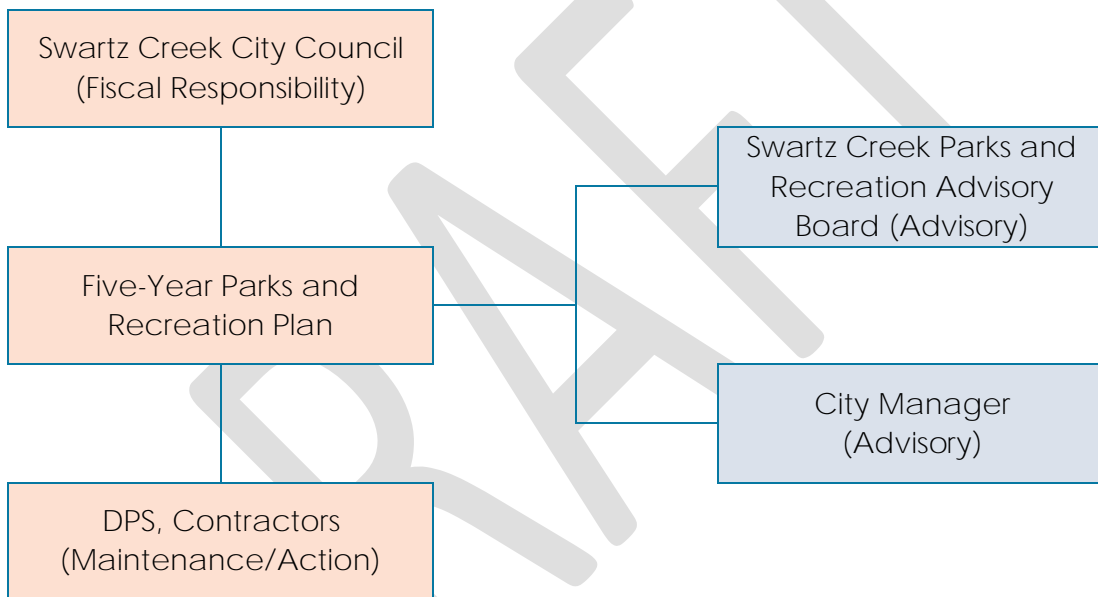
Population Trends for Swartz Creek 2000 - 2020		
Census	Population	Population %
2000	5102	+5.2%
2010	5758	+12.9%
2020	5897	+2.4%

ADMINISTRATIVE STRUCTURE

The Swartz Creek Parks and Recreation Advisory Board is responsible for developing the Parks and Recreation Plan and spearheading recreational projects. Expenditures are approved by City Council with recommendations from both the advisory board and the City Manager. The Department of Public and Community Services (DPCS) is responsible for maintenance of city parks.

The City of Swartz Creek budgeted approximately \$195,315 for parks and recreation improvements and maintenance in 2021 – 2022 Fiscal Year. A detailed line-item budget for each park is included in the appendix.

Flow Chart



RECREATION INVENTORY

The following is a summary of local recreational facilities available to the residents of Swartz Creek and surrounding area.

The only publicly owned and operated parks in the City of Swartz Creek are Elms Park, Abrams Park, and Shumaker Bicentennial Park (see Map 1: Park Location Map) and are shown in bold type in Table 1. The Pajtas Amphitheater and Veterans Memorial are on city property but are managed by non-profits. All other recreation opportunities in the city are provided either by the school district, private facilities, or semi-public facilities.

Table 1: Swartz Creek Recreation Inventory

Name	Facilities Available	Total Acreage
Mary Crapo School	Playground 1 Ball Diamond used for youth baseball	
Pajtas Amphitheater	1 Enclosed Bandshell Lawn Seating for 1,200	2
Senior Citizen Center	Seating for 120 w/ Full Kitchen and Restrooms	
St. Mary's Church & School	2 Baseball Fields 1 Playground 1/2 Basketball Court	3
Sport Creek Racetrack (not operating; for sale)	1,950 Seats - General Admission 408 Seats - Club House	107.7
Genesee Valley Meadows	18 holes	192
Elms Road Elementary School	3 Softball Diamond (1 for Adults) 1/2 Basketball Court Playground 1 Multi-Purpose room w/ stage	7
Elms Park	5 Pavilions 2 Playgrounds 28 Picnic Tables 2 Soccer Fields 3 Tennis Courts 2 Basketball Courts 1 Sledding Hill 1 Ball Field 1 Volleyball Field Restrooms	29
Morrish Elementary School	2 Ball Diamonds 1 Soccer Field Playground ½ Basketball Court 1 Multi-Purpose Room	3
Gaines Elementary	2 - ½ Basketball Courts 1 Soccer Field/Softball Field 1 Soccer Field Playground Multi-Purpose Room	3
Pine Hill Park (Village of Gaines)	1 Pavillion 22 Picnic Tables 2 Ball Diamonds 1 Tractor Pull Area	20

City of Swartz Creek Five Year Parks and Recreation Plan

Name	Facilities Available	Total Acreage
First Baptist Church	1 Soccer Field 1 Ball Diamond ½ Basketball Court	2
Syring Elementary School	2 Ball Diamond Playground 1 Multi-Purpose Room	3
Abrams Park	9 Station Fitness Course Playground 4 Pavilions Restrooms 21 Picnic Tables 6 Grills 1 Ball Diamond 2 Tennis Courts ½ Basketball Court 1 Sledding Hill 1 Tot Lot	11
Messiah Lutheran Church	1 Ball Diamond	½
Swartz Creek Middle School	2 Ball Diamonds 4 Soccer Fields 1 Varsity Baseball Diamond 1 Pool 1 Tennis Court	9
Swartz Creek High School	1 Track & Field Event Area 1 Football Field 1 Set of Restrooms 1 Soccer Field	9
Dieck Elementary School	Playground 3 - ½ Basketball Courts 1 Ball Diamond	3
Calvary Church of Christ	1 Ball Diamond	½
United Methodist Church	1 Pavilion 1 BBQ Pit 20 Picnic Tables 1 Ball Diamond 1 Soccer Field 1 Croquet Court	3
Cornerstone Baptist Church	1 Ball Diamond	2
Shumaker Bicentennial Park	1 Pavilion	1
Otterburn Park	Disc Golf (Under Construction)	20
Veterans Memorial	Public Plaza	¼
Cage Fieldhouse	Indoor sport complex	5

Status of Grant Funded Facilities

In 1971, Elms Park was awarded a \$36,300 MDNR grant (#26-00258) to acquire 24 acres to develop baseball, football fields, access road and parking, and a playground. These improvements are currently in use. In 1976, a \$34,700 MDNR LWCF grant (#26-00707) was used to provide six tennis courts. These courts are in use and provide multi-use function for other recreation in addition to tennis.

In 1975, Abrams Park (formally known as Winshall Park) received a \$16,585 LWCF grant (#26-00556) to provide a picnic shelter with restrooms. The city made upgrades to this, and it is currently in use. In 1977, an additional grant (26-00904) of \$33,588 was used to develop two tennis courts and parking at Winshall and two picnic shelters and additional access at Elms Park. These improvements are still in use.

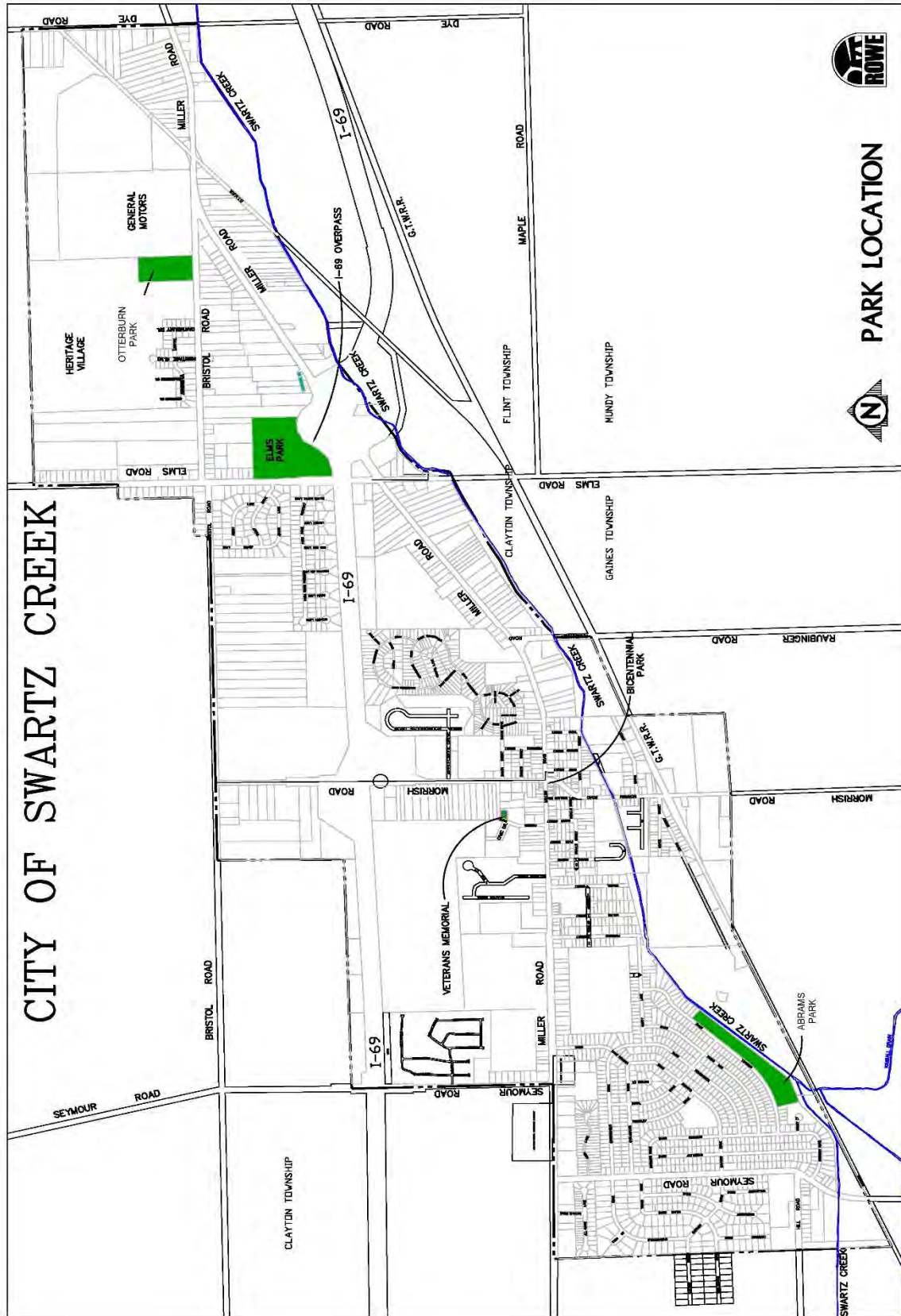
In 2015, the city was awarded a Recreation Passport grant of \$45,000 (RP15-0003) for upgrades and barrier free improvements to the restrooms at Elms Park, and a second phase which is currently being completed that includes an accessible pathway, exercise stations and accessible parking connecting to a pavilion within the park. As part of this grant process, a property exchange was made within the park for the existing cell tower.

Non-Motorized Plan

As part of an effort promoted by the Genesee County MPO, the city refined the previous non-motorized plan that has been in place since 2000. Through this effort, three phases of trail were identified that includes 4.7 miles of trail. It provides for connection into the regional Genesee County Trail network and indirectly linking to the Iron Belle statewide trail. The three phases include:

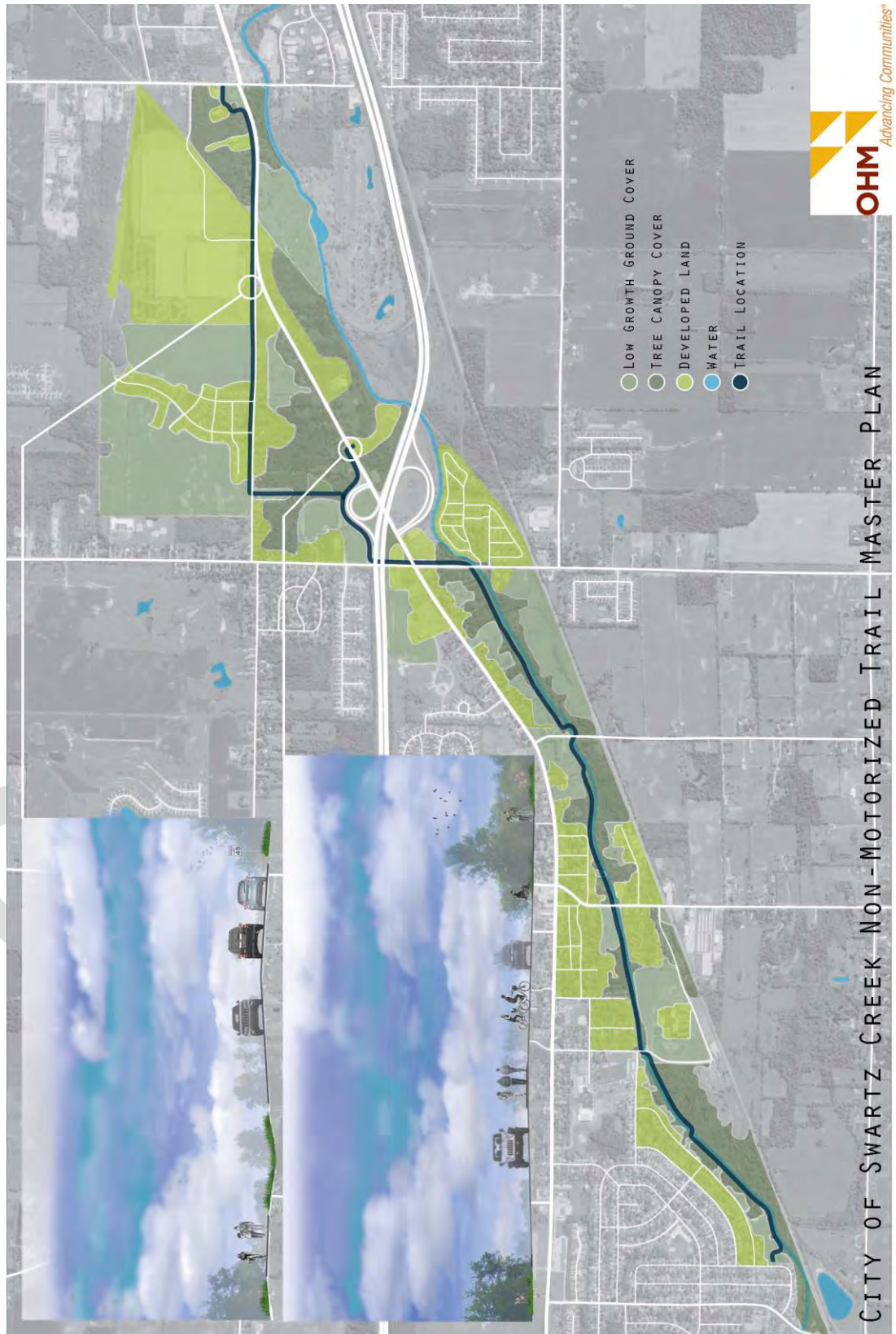
- Phase 1 Elms Road to South Dye Road
- Phase 2 Morrish Road along west branch of Swartz Creek to Elms Road, north to Miller Road
- Phase 3 Abrams Park along west branch of Swartz Creek to Morrish Road

The overall construction cost opinion for the projects is approximately \$1.8 million, not including engineering or any easement costs. Preliminary engineering drawings were provided which provides a basis for grant applications to seek funding for the projects.



Map 1: Park Location Map

Map 2: Trail Master Plan Map



There are a wide range of recreational opportunities available throughout the area. However, it must be noted that accessibility to these facilities is generally a function of having access to an automobile.

Table 2: Regional Recreational Facilities

Recreation Facility	Acres	Use
Seven Lakes State Parks	1,378	Picnic Areas, Shelters, Playground, Boat Launch, Swimming, Fishing, X-Country Skiing
Holly State Park	7,470	Camping, Picnic Areas, Shelters, Playground, Boat Launch, Swimming, Fishing, X-Country Skiing
Highland State Park	5,524	Camping, Picnic Areas, Shelters, Playground, Boat Launch, Swimming, Fishing, X-Country Skiing
Ortonville State Park	3,205	Camping, Picnic Areas, Playground, Boat Launch, Swimming, Fishing, X-Country Skiing
Pontiac Lake State Park	3,700	Camping, Picnic Areas, Shelters, Playground, Boat Launch, Swimming, Fishing
Brighton State Park	4,913	Camping, Picnic Areas, Shelters, Playground, Boat Launch, Swimming, Fishing, X-Country Skiing
Dodge No. 4 State Park	139	Picnic Areas, Playground, Boat Launch, Swimming, Fishing, X-Country Skiing
Island Lake State Park	3,466	Camping, Picnic Areas, Shelters, Playground, Boat Launch, Swimming, Fishing
Metamora Hadley State Park	683	Camping, Picnic Areas, Playground, Boat Launch, Swimming, Fishing
Proud Lake State Park	3,614	Camping, Picnic Areas, Playground, Boat Launch, Swimming, Fishing
Bald Mountain State Park	4,637	Camping, Picnic Areas, Shelters, Playground, Boat Launch, Swimming, Fishing, X-Country Skiing
Kensington State Park	N/A	Camping, Picnic Areas, Shelters, Playground, Boat Launch, Swimming, Fishing, X-Country Skiing
Marshbank State Park	N/A	Picnic Areas, Shelters, Playground
Timberwolf Genesee County Campground	N/A	Camping, Picnic Areas, Shelters, Playground, Boat Launch, Swimming, Fishing
Wolverine Genesee County Campground	N/A	Camping, Picnic Areas, Playground, Boat Launch, Swimming, Fishing
Groveland Oaks Oakland County Campground	N/A	Campground, Picnic Areas, Playground, Boat Launch, Swimming, Fishing
Addison Oaks Oakland County Campground	N/A	Camping, Picnic Areas, Shelters, Playground, Boat Launch, Swimming, Fishing, X-Country Skiing
Lapeer State Game and Wildlife Area	9,000	Hunting-Wildlife Area, Fishing, X-Country Skiing

Flushing County Park	105	Playground, picnic areas, pavilions, basketball courts, softball diamonds, tennis courts, 2-mile cross country ski trails
Linden County Parks	135	Swimming, picnic area, playground, tennis courts, ball diamonds, bike/hike trail
Chevy Commons	60	Bike/Hike Trails, Fishing, Flint River Access, Boat Launch

BARRIER-FREE COMPLIANCE AND PARK CONDITIONS

The following summaries address the accessibility of city parks and recreation facilities in compliance with the Americans with Disabilities Act Accessibility Guidelines (ADAAG). In general, all construction since 1991 was required to comply with these guidelines. Recent improvements in parks have greatly increased accessibility.

A general ranking for each park was determined through site visits as follows.

- 1 = none of the facilities/park areas meet accessibility guidelines
- 2 = some of the facilities/park areas meet accessibility guidelines
- 3 = most of the facilities/park areas meet accessibility guidelines
- 4 = the entire park meets accessibility guidelines
- 5 = the entire park was developed/renovated using the principals of universal design

Evaluation of Existing Facilities:

Elms Park (2)

Elms Park is located off of Elms Road; between I-69 and Bristol Road.

Elms Park is made accessible to pedestrians by a 4-foot-wide sidewalk along the east side of Elms Road, running adjacent to the park for its entire frontage along Elms Road.

Elms Park is a multi-use area with many recreational facilities scattered throughout. There are several parking areas located throughout the park with access to park amenities. However, barrier-free accessibility tends to be an issue due to a lack of pedestrian paths linking facilities directly to the parking lots.

There is a total of five existing pavilions in the park. All have been constructed with a foundation that is flush with the ground, enabling wheelchairs or people with severe mobility limitations to enter without difficulty. One of the largest pavilions has hard-surfaced paths providing access into the structure; an paved paths and a route to nearby accessible parking was completed along with the addition of accessible exercise stations. Future extension of this internal path will provide accessible routes

to other park elements. The barbeque grills at the two large pavilions are built into the pavement, and there are additional grills without hard-surfaced paths.

The tennis courts and basketball courts are located near a gravel parking lot. Access can be improved with the addition of a paved sidewalk and barrier free parking spaces.

The existing ball field, soccer field, and small playground area are also without hard-surfaced paths leading to each facility. The horseshoe pits have been removed at Elms Park. The city has addressed these concerns by improving the system of wood chip paths leading from parking areas to facilities within the park.

The playscape area in the northwest portion of the park is an example of the recent efforts the City of Swartz Creek has made toward improving accessibility. The parking lot near the playscape has three marked handicap parking spaces located near the playscape and pavilion. A 6-foot-wide concrete path leads from the parking area into the playscape and the pavilion adjacent to the playscape. This makes it possible for people with disabilities to utilize both the playscape and pavilion.

The playscape is of barrier-free design. The surface of the play area is engineered wood chip. The play structures are designed to provide play opportunities for both those with and without accessibility limitations.

The pavilion is relatively large, suitable for picnics, meetings, parties, or simply informal use. The pavilion includes a large fireplace/barbeque, many picnic tables, and a barrier-free restroom that was improved in 2016.

Residents have mentioned the need for maintenance and renovations to the restroom facility on-site and also further improvements with the existing hard surface courts (basketball and tennis).

The small playground area in the northwest corner of the park is comprised of tot-lot playground equipment which is of barrier-free design. The city previously has focused its efforts on providing a barrier-free children's play area in the playscape on the other side of the drive. A hard-surfaced path system will also be developed within the play area.

Transition and Implementation Plan

The City of Swartz Creek intends to improve accessibility to Elms Park facilities by developing a barrier-free paved pedestrian trail throughout the



park. Trailheads will link the trail with each parking area. The trail will be designed to loop throughout the park and link facilities. Engineered wood chip paths will be spurred off the main trail, providing barrier-free access to all facilities. Future facilities will be linked to the trail as they are developed.

Signage identifying the locations of facilities will be provided along the trail where appropriate and all future recreational facilities will be of barrier-free design.

Abrams Park (2)

Abrams Park is located across the street from a single-family neighborhood. The park backs up into Swartz Creek.

Evaluation of Existing Facilities

As with Elms Park, Abrams Park provides a wide range of recreational opportunities. However, the facilities are scattered throughout the park without a barrier-free connection to many of the facilities.

There is an existing 4-foot-wide sidewalk along Winshall Drive, across the street from the park and there is no sidewalk along Winshall Drive within the park. A trail with exercise stations runs roughly around the perimeter of the park; however, the surface of the trail is grass and is not barrier-free.

There is a fenced tot lot area, including a large play structure located in the northeast area of the park. Barrier-free access is provided to the tot lot by a 3-foot-wide concrete sidewalk leading from Winshall Drive, as well as a 4-foot-wide wood chip path leading from the parking lot and pavilion. The play structure is of barrier-free design. The play surface of the tot lot is engineered wood chips under all the play structures, and grass in other areas. There is no path leading to each play structure within the play area, which means that barrier-free access is limited to those areas directly connected to the engineered wood chip path. Linking the structures with a wood chip surface is a maintenance issue. Most of the play equipment along the perimeter of the tot lot appears to be barrier-free; however, some of the equipment is inaccessible to children with mobility limitations. Future equipment developed within the play area should be of barrier-free design per Americans with Disabilities Act guidelines.

The pavilion near the play area is linked to the parking lot by a 4-foot-wide engineered wood chip path. All pavilions in the park have been constructed with foundations that are flush with the ground.

The tennis courts have entrances designed to keep out bicycles. Unfortunately, these entrances also keep out wheelchairs. A barrier-free entrance should be added to the tennis court facility. The tennis courts, ball field, and basketball court lack barrier-free paths leading to each facility. The tennis courts need to be resurfaced or repaired.



As part of the replacement of the restroom building, all accessibility requirements were met, including a concrete sidewalk to the gravel parking lot. Continual cosmetic improvements are always encouraged (i.e. trash collection, interior repairs)

The existing water fountain near the ball field is of barrier-free design. A path has been developed to link the fountain to the pavilion and parking area.

There are sidewalks along both sides of Whitney Court that end at the park boundary line. The city intends to connect to at least one of these sidewalks, thereby improving accessibility into the park for neighborhood residents. Presently, the lack of sidewalks into the park and the existing curb around the Whitney Court cul-de-sac creates accessibility limitations.

Transition and Implementation Plan

The City of Swartz Creek intends to improve accessibility to Abrams Park facilities by developing a barrier-free pedestrian river walkway along Swartz Creek, along the entire length of the park. Barrier-free connections will be provided to the walkway from each parking area as well as to appropriate areas on Winshall Drive and Whitney Court. Future trail improvements will be designed to provide barrier-free access to Swartz Creek as well as link facilities throughout the park to each other. As with Elms Park, engineered wood chip paths will be spurred off the paved trail, providing barrier-free access to all facilities within the park.

Signage identifying the locations of facilities will be provided where appropriate. Future facilities will be linked to the trail as they are developed. All future recreational facilities will be of barrier-free design.

The city currently has a walkway to Swartz Creek Middle School along the Swartz Creek. This improves barrier-free access to the park and the creek for area students.

Shumaker Bicentennial Park (3)

Bicentennial Park is a small pocket park located along Morrish Road, just south of Miller Road.

Evaluation of Existing Facilities

There is a small pavilion located in the park. There is a marked handicap parking space immediately adjacent to the pavilion. There is a relatively complete system of 5-foot-wide sidewalks linking the downtown area and the surrounding residential area to the park. However, the pavilion is surrounded entirely by grass. The lack of a hard-surfaced path leading into the pavilion poses an accessibility limitation.



Transition and Implementation Plan

Future improvements to the park should include the development of a barrier-free hard-surfaced path leading from the sidewalk near the handicap parking space, to the pavilion.



Veterans Memorial Park (4)

This site was completed in the last few years and was designed to meet current accessibility requirements.

Otterburn Disc Golf Park (1)

The city has begun work on developing Otterburn for use as a disc golf course. Currently, the disc golf baskets and routes have been developed and a sledding hill currently exists north of Bristol Road. Future improvements include the construction of a pavilion, gravel parking with ADA accessible parking spaces, eight-foot vehicular access path around the perimeter of the park, small pavilion with porta-john location and bike pavilion station.

Volunteers have been maintaining the site and installing the disc golf baskets along the routes.

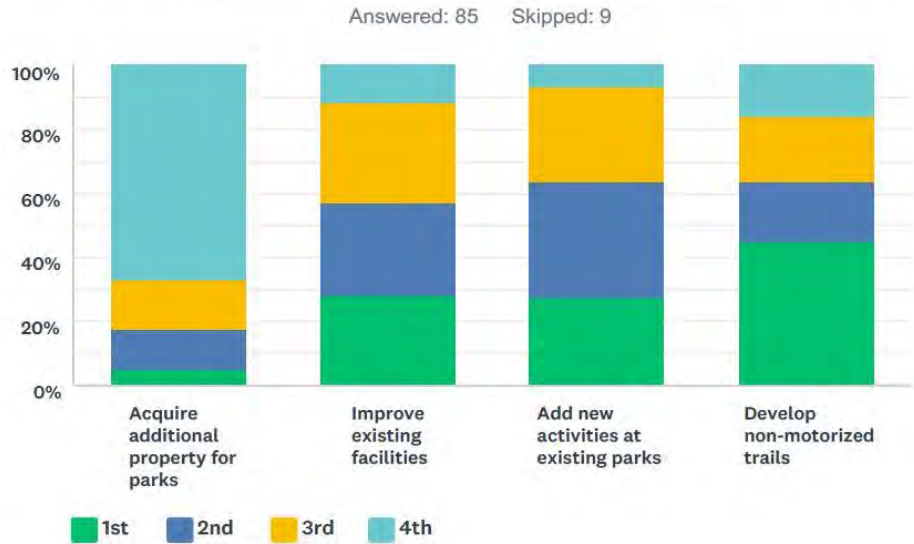
Transition and Implementation Plan

The intent of the park construction is to ensure that all routes from the parking lot provide accessible routes for disc golf.

DESCRIPTION OF PLANNING PROCESS

ROWE Professional Services was hired to assist the city with the update to the recreation plan. In August 2022 the Park and Recreation Advisory Board began discussions on the update of the recreation plan. The board reviewed current goals, objectives, and action plan items at its July meeting.

Q7 Please rank your priority for use of funding



In June, the board approved a survey to be conducted by the residents and park patrons to complete. Over 150 residents gave comments towards the current condition of park properties and suggestions for future improvements. A copy of the questions and summary of results is included in the appendix and summarized as follows.

The Parks and Recreation Board also recommended having a focus group interview to review the previous goals and objectives from the previous parks and recreation plan. The focus group was convened on September 15, 2022. Information and agendas in the appendix.

The draft plan was presented in a public hearing on _____ and recommended for adoption by city council following the hearing. The plan was approved by city council on _____. Copies of the public hearing notice, meeting minutes, and resolution have been included in the appendix.

A final copy of the plan was uploaded to the MDNR MiRecGrants website with a transmittal letter noting that a copy has been sent to the local planning agency for acceptance. Post completion forms and completed checklist for the recreation plan process was also included.

GOALS AND OBJECTIVES

The following are goals and objectives as summarized by the Parks and Recreation Advisory Board based on broad community input (through a community survey and

focus group meeting). These goals represent a flexible tool that will guide the focus of resources for park and recreation maintenance and development. This format will allow decisions to be made based on changing conditions and take advantage of opportunities as they are presented to the community.

The goals focus primarily as a guide to educate the public on the value of its park system and to leverage development and maintenance efforts by pursuing partnerships, outside funding and volunteerism.

Goal 1: Pursue grants and develop partnerships and advocates to serve park needs

Continue to seek partnerships with other recreational providers and agencies and with neighboring communities to share ideas and provide non-competing programs and facilities. (Examples include but are not limited to civic groups, schools, community groups and partnerships, , etc.)

- » Be proactive: establish a coordinated list of projects for civic groups to build, fund, etc. versus reacting to individual requests.
- » Apply for grants to develop park facilities maximizing in-kind or leveraged grant match due to limited city funding.
- » Develop a stronger partnership with the county parks system to provide community recreational opportunities to the residents of Swartz Creek.
- » Collaborate with the DDA on the development of a market/special event space (Holland Square) that can be used as a staging area for bike/foot races, etc. that could link to parks and trail facilities.
- » Develop programming within the city through additional staff or partnering with neighboring municipalities for recreational programming.

Goal 2: Enhance use of existing park facilities and programs

- » Replace tree cover throughout city and at key parks due to impact of Emerald Ash Borer and proliferation of Cottonwood trees.
- » Conduct tree inventory for health of urban forest.
- » Renovate restrooms so they are inviting, accessible and more maintenance friendly.
- » Improve floor of Abrams Park restroom for long-term sustainability.
- » Explore adding small features in park to increase all-season use.
- » Consider interpretive signs that engage users by offering information on local history, environment, and culture.

Goal 3: Pursue non-motorized trail system

- » Utilize and expand on existing sidewalks and bike lanes to provide linkages to parks, schools, neighborhoods, and retail destinations.
- » Maintain routes as appropriate for all-season use.

- » Coordinate construction with other local projects as appropriate for efficiency.
- » Implement connection to the Genesee Valley Trail/Genesee County trail system through the Metropolitan Planning Commission.

Goal 4: Regularly review maintenance practices and policies for park facilities and update when necessary

- » Park and Recreation Advisory Commission to review procedures on an annual basis (upon meeting of new members in February) and provide recommendations to city staff and/or council.
- » Be proactive with volunteer groups to complete maintenance efforts in coordinated effort with each other and city staff; better communication between DPW, city services and volunteer groups.
- » Review Park properties to determine current usage.
- » Establish a maintenance schedule and budget for recreation items such as phases of re-staining of the wood playground in Elms Park to complete an orderly process for upkeep of this facility.
- » Coordinate with the school district to improve the properties that provide increased access to natural features and education on forestry, water and land stewardship.

ACTION PLAN

The following is a description of the projects that the Parks and Recreation Advisory Board has determined are recreational priorities for the city. Justification is provided for each project. A list of potential funding sources is also included.

Short-Term Projects

- Replace backstops in Elms Park. Work on maintenance around the park as well with the playground equipment.
- Develop Checklist for routine asset maintenance
- Remove and replace the cottonwood trees in Abrams Park with something new (i.e. Swamp Oak, Elm Trees)
- Annual maintenance to play equipment, including staining of sections of Elms Park play structure in a more organized, thorough manner rather than tackling the entire structure at one time.
- Depending on grants and other match funding, development of the non-motorized trail may be timely with improved bid pricing due to local road projects by the city.
- Additional security measures to protect parks from vandals.
- Add parking on the east side of Elms Park while maintain green space and the separation between the parking area and park amenities.

Mid-Term Projects

- Add exercise stations in Abrams Park Improve restrooms.
- Repurpose tennis courts at Abrams Park – Seek community input for replacement amenity for the park.
- Continue to make improvements at all park properties to ensure accessibility to all park amenities (i.e. playground equipment, field access, parking accommodations)
- Work with the school district to develop the southwest corner of Cappy and Fairchild to include forestry education, community garden, play equipment, and creek observation deck.

Work with Swartz Creek Community Schools to plan the reuse of the Mary Crapo site. This site could provide additional property for future sports fields for the school district. A cooperative effort with the school might be sought as both the city and schools have limited budgets.

- Converting softball fields to baseball fields is still a viable option. Most of the softball fields could be converted since most of the groups that would use the field would be little league teams.

Long-Term Projects

- o Complete work at Otterburn Park (Disc Golf Course) Construction of pavilion, bike station, 8'-accessible paths through the site, parking, signage, restrooms, forestry and sledding hill.

Develop Non-Motorized Trail

Elms Park Internal Trail

Based on the success of grant funding, the city proposes that an aggregate non-motorized trail system be developed throughout the park. Establishing a pedestrian trail is a high priority for the city. Given the available area within the park, Elms Park is the ideal location for the trail system.

It is proposed that the trail system be looped through the park, providing a pedestrian link between park facilities. Trail users will be able to enter the park from the sidewalk along Elms Road without having to share the entry road with vehicles. This will increase pedestrian safety. It is anticipated that the trail would be of barrier-free design, and 8 feet to 10 feet in width. This would allow a wide range of users such as walkers, runners, people in wheelchairs, or bikers to use the trail safely and efficiently. The paved surface will be durable and low maintenance. Traffic control and a well-defined crosswalk will be provided wherever the trail crosses a vehicular drive. The length of the proposed trail loop within the park will be approximately 1,300 linear feet, or ¼-mile.

The city proposes that signage be placed at appropriate trailhead locations throughout the system. The signs would show the following information: park boundaries and facilities, location of other trailheads, connections to secondary trails and other linkages, trailway distances, and location of water fountains and restrooms. Benches will be added along the trailway to provide rest areas for trailway users.

Extend Non-Motorized Trail to Elms Road Elementary School

There is an existing Consumers Power Easement that connects the park to Elms Road Elementary, which is located approximately ¼-mile north of the park. The proposed trail connection will provide the school with an opportunity to utilize the facility for recreational activities such as gym classes and cross-country running events. The park will also provide a pedestrian connection from the school to residential neighborhoods to the south. This will allow students to walk, bicycle, etc. to school.

Abrams Park Trail Improvements

The development of a non-motorized trail along Swartz Creek through Abrams Park is a long-term priority for the city. The location of the Swartz Creek and the

natural character of the park make Abrams Park an attractive location for a trail system.

It is proposed that a paved or aggregate trail system be located along the Swartz Creek which would provide public access to the waterway as well as a pedestrian link between park facilities. Trail users will be able to enter the park from the sidewalk along Winshall Drive and continue traveling through the park on the trail. It is anticipated the trail would be of barrier-free design, constructed with a paved or aggregate surface, striped, and 8 feet to 10 feet in width. The surface will be durable and low maintenance. The length of the proposed trail loop within the park will be approximately 1,300 feet, or ¼-mile. A proposed pedestrian bridge would provide access to the property on the other side of the Swartz Creek.

Extend Non-Motorized Trail to Swartz Creek Middle School

The city proposes that the trail be connected to Swartz Creek Middle School by extending the trail from the park to the school along the Swartz Creek County Drain easement. The school is located approximately 1 mile to the northeast. This trail would provide recreational and educational opportunities to students. It would also provide a safe pedestrian link to the school through the park to the residential neighborhoods east of the park.

Develop Non-Motorized Trail Regional Connections

The city will continue to work with the Genesee County Metropolitan Planning Commission along additional connection around the city (where necessary).

Maintain Open Space

Development within the park should be limited to maintain open space. This allows for pickup games, soccer practice, and other non-programmed activities. The existing facilities should be maintained, such as the ongoing boy scout project to upgrade the existing exercise stations. The addition of lighting within the park will allow neighbors and others to keep an eye on activities within the park, reduce the potential for vandalism, and increase use.

Improve Existing Playground Equipment

There is some existing playground equipment that remains to be updated. The equipment is limited in terms of function and needs to be updated and expanded. Improving the play area will provide additional recreational opportunities to children and young families and address safety factors. These improvements should include seating and fencing.

- Rehabilitate 1/2 Basketball Court at Abrams Park

The city will consider expanding or improving the existing court. This will increase the recreational opportunities for older children and adults.

- Resurface basketball court/tennis court into tennis only court in Abrams Park

Shumaker Bicentennial Park

Shumaker Bicentennial Park is a relatively small park located on Morrish Road, south of Miller Road. The city owns property on both sides of the road and intends to maintain both sides of the road as park open space. The city has completed a pavilion and barrier-free sidewalk on the east side of the road. Continued “complete streets” improvements along this corridor will enhance recreation connections throughout the city.

- Potential partnership with the DDA.

Administration

Develop partnerships with groups like the school, Mundy Township, Genesee County, and youth athletic groups that can result in recreational programming, event planning, sponsorships, and volunteerism.

Consider formal agreements and partnerships that may eventually lead to regional park and recreation planning, funding, and management.

CAPITAL IMPROVEMENT PLAN

The following schedule is a summary of the action plan that includes key maintenance and development projects in an approximated timeline for completion pending available funding:

Funding Key:

MNRTF – MDNR Trust Fund

Passport – MDNR Recreation Passport

TAP – MDOT Transportation Alternative Program

GF – General Fund

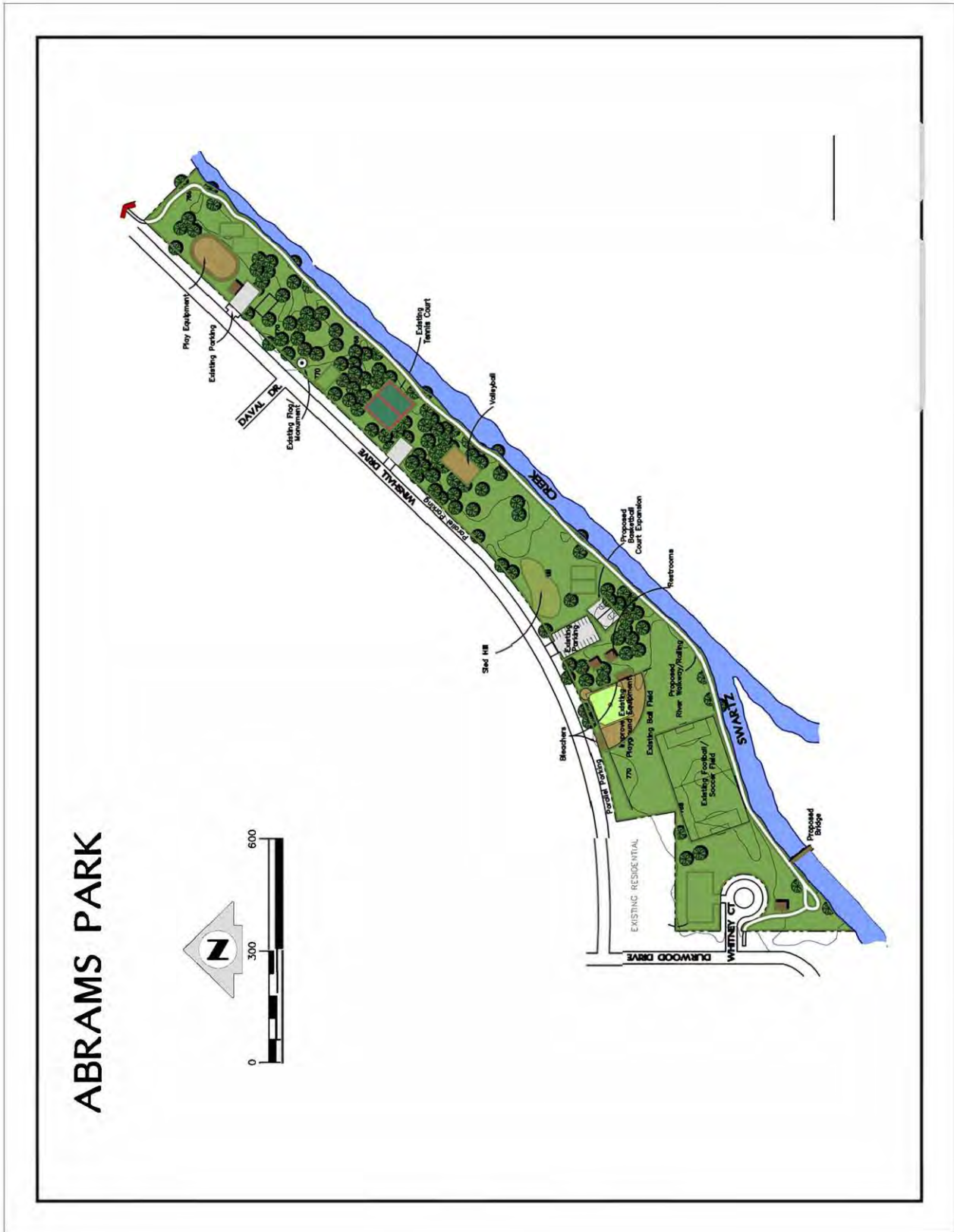
Private – Private Donation/Foundations

Capital Improvement Plan			
Year	Project	Cost	Funding
Years 0-5	Abrams Park		
	• Tree replacement (On-Going)	\$10,000	CE, Private GF, Passport
	• Annual maintenance (\$40,000 per year x 5)	\$200,000	
	• Renovate restroom floor, add exercise stations – Minor renovations have already occurred (doors and fixtures)	\$15,000	
	• Refurbish Basketball Courts (2023)	\$65,000	
	Total	\$290,000	
	Elms Park		
	• Replace backstops (2023)	\$5,000	GF, Passport, Private
	• Drainage improvements, extend internal path (2023)	\$20,000	
	• Annual maintenance (\$50,000 per year x 5)	\$250,000	
	• Reclaim Eastside of Elms Park	T.B.D.	
	Total	\$300,000	
	Otterburn Park		
	• Pavilions	\$200,000	
	• Gravel Parking and ADA Accessible Parking Spaces	\$80,700	
• 8'-Aggregate Path	\$35,000		
• Site Preparation/Grading	\$215,700		
• Site Amenities (i.e. trash receptacles, benches)	\$2,500		
• Pedestrian Bridge	\$104,000		
• Bike Pavilion Station	\$20,000		
Non-Motorized			

City of Swartz Creek Five Year Parks and Recreation Plan

Capital Improvement Plan				
Year	Project	Cost	Funding	
	<ul style="list-style-type: none"> Construct Phase 1 of regional trail system – currently out for bids 	\$150,000	TAP, MNRTF, GF, Private	
	Total	\$150,000		
	Total for 0-5 Years	\$740,000		
Years 5-10	Abrams Park			
	<ul style="list-style-type: none"> Annual maintenance (\$50,000 per year x 5) 	\$250,000	Private, GF, Passport	
	<ul style="list-style-type: none"> Refurbish or repurpose tennis courts 	\$125,000		
	<ul style="list-style-type: none"> Disc Golf (9-holes) 	\$4,500		
	Total	\$479,000		
	Elms Park			
	<ul style="list-style-type: none"> Annual maintenance (\$60,000 per year x 5) 	\$300,000	GF, Passport, Private	
	Total	\$310,000		
	Bicentennial			
	<ul style="list-style-type: none"> Remove or enhance pavilion with new features 	\$150,000	MNRTF, GF, Private, DDA	
	<ul style="list-style-type: none"> New Benches 	\$3,000		
	Total	\$153,000		
	Non-Motorized			
	<ul style="list-style-type: none"> Construct Phase 2 and 3 of regional trail system 	\$350,000	TAP, MNRTF, GF, Private	
	Total	\$350,000		
		Total for 5-10 Years	\$1,292,000	

Map 4: Abrams Park Drawing



Map 5: Otterburn Park Drawing



LEGEND:

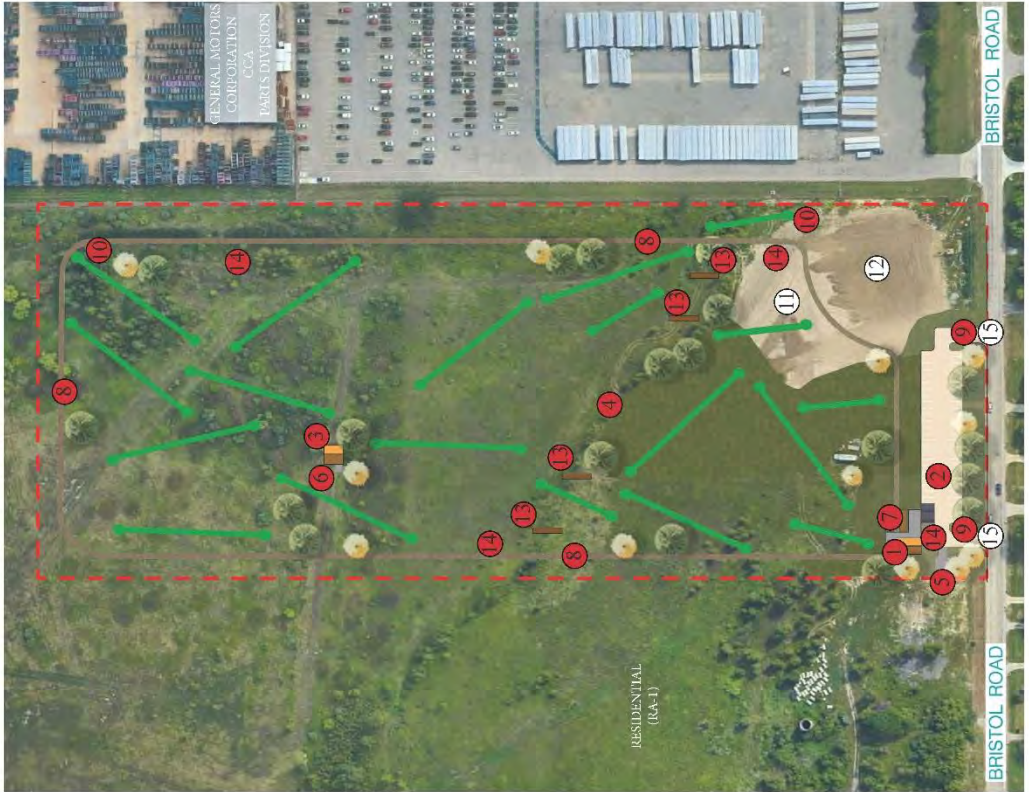
--- PARK BOUNDARY

PROPOSED:

- 1 LARGE PAVILION WITH RESTROOM FACILITY
- 2 GRAVEL PARKING WITH ACCESSIBLE SPACES
- 3 SHELTER/SMALL PAVILION
- 4 DRAINAGE DITCH
- 5 WASTE ENCLOSURE
- 6 PORTA JOHN LOCATION/CONCRETE PAD
- 7 BIKE PAVILION STATION
- 8 8' AGGREGATE PATH WITH VEHICULAR ACCESS FOR EMERGENCY PERSONNEL AND PARK SERVICE
- 9 ENTRANCE DRIVE WITH STEEL-CABLE BOLLARDS AROUND PARKING LOT
- 10 STAIRS
- 11 PEDESTRIAN BRIDGE
- 12 TRASH RECEPTACLE

EXISTING:

- 11 DISC GOLF (TYP.)
- 12 SLEDDING HILL
- 15 CURB CUTS



NOVEMBER 2022
22C0112

ROWE PROFESSIONAL SERVICES COMPANY



OTTERBURN PARK SITE PLAN
SWARTZ CREEK, MI



POTENTIAL GRANT SOURCES

Potential Grant Source	Maximum Request Amount	Minimum Local Match	Submission Deadline	Eligible Projects
Land and Water Conservation Fund (LWCF) Grant	\$300,000 (Pending federal funding)	50%	April 1 MDNR	May be applicable to development of sports fields or trails that link or provide access to recreational resources
Michigan Natural Resources Trust Fund (MNRTF) Grant – Acquisition Project	No Limit	25%	April 1 MDNR	Purchase of land intended to provide outdoor recreation or protection of Michigan significant natural resources
MNRTF Grant – Development Project	\$300,000	25%	April 1 MDNR	Development of lands to provide outdoor recreation or protection of Michigan significant natural resources
MDNR – SPARKS Grant	\$1,000,000	NONE	December 2022 TBD 2023 TBD 2024	Projects that enhance features in neighborhoods and renovate or revitalize recreational programming/activities in communities.
Recreation Passport	\$75,000	25%	April 1 MDNR	Re-development of existing park and recreation facilities
Transportation Alternative Program	No Limit	20%	No deadline MDOT	Purchase and development regarding non-motorized, related to transportation. Program emphasis is more on providing connections than recreation opportunities
DTE Tree Foundation	\$3,000		Summer	Tree planting projects such as park, right-of-way, city street, nature study areas, school grounds planting, and neighborhood revitalization projects. All trees must be planted on public land or land open to the public

Federal and State Grants

There are a variety of funding sources available to local governments for park development - The Michigan Department of Natural Resources Recreation Division administers the Land and Water Conservation Fund (LWCF) and the Michigan Natural Resources Trust Fund (MNRTF). Special initiatives are identified each year by the MDNR that receive special consideration for grants. These should be monitored yearly, and

potential projects investigated. Current initiatives relate to acquisition of land for trailways, hunting, or buffer areas for habitat and development of shooting ranges.

- ***Michigan Natural Resources Tree Planting Grants***

Through the Michigan Department of Natural Resources, there are three tree planting, grant programs that will assist in funding landscape enhancements at the park and reforestation projects. Applicants must provide at least 50% of the total project cost.

Other funding is also available through other divisions that can be used as match, supplemental or backup funding. EGLE (Environment, Great Lakes, and Energy) Department for the State of Michigan has other programs such as the Clean Michigan Initiative (CMI) for water and coastline area and erosion control. Other types of funding go to support existing projects that can be paired with other projects in the community. For example, the pending Congestion Mitigation and Air Quality (CMAQ) grant for Phase 1 of the trail system could be used as match to other funding and complete additional phases. Federal Transportation Enhancement grant program can be used for the construction of non-motorized facilities such as multi-use paths connecting parks. Other grants include the Forest Management Division MDNR Community Forestry grant program that could help fund a tree planting program for the parks.

Another potential funding source would be through the Urban Community Forestry program through the USDA Forest Services. This organization makes funds available to local units of government and non-profit organizations for street and park tree replacement, Arbor Day celebrations, and tree plantings.

Other Local Funds

Placing special assessments on private property owners for construction of a bike/hike trail abutting their property, for example, could be another funding strategy. Special assessments are often set up to finance sidewalks, sewer, or street projects. The same could be done for sections of the trail system, if needed.

Appropriations from the City's General Fund are possible when a prompt commitment of funds is necessary, and the funds are available. Special assessments are levied against the owners of the property and this income is pledged to the repayment of the bonds. Such bonds usually carry a higher rate of interest than general obligation bonds but have the advantage of not being charged against the city debt limit.

Other Sources of Funding

Additional sources of funding will be investigated. Seeking donations, attracting sponsors, special mileages, bonds, user fees, and holding fund raising events are methods to raise funds for the development of recreational facilities.

The track record for community involvement in the city for a variety of projects has been impressive. Community organizations, businesses, and individuals have stepped up time and time again to lend their time, talent, and financial support to worthwhile community projects. While this kind of community support cannot always be measured, it should never be overlooked.

- ***Community Development Block Grants (CDBG)***

Projects eligible for **CDBG** funding must be in a low-moderate income service area and/or provide access to the disabled to qualify. Investments using CDBG funds must provide a documented benefit to low-moderate income households. Projects eligible for funding include public infrastructure improvements and those that provide ADA accessibility.

Partnering/Advocates

The community has some land within Otterburn Park which can be leveraged with needs from surrounding municipalities to support a sports complex or other possibilities. A regional partnership with other communities could be useful in providing recreational programming and amenities to the area.

APPENDIX

- Survey Responses
- Budget
- City Park Reservation Maps
- Post Completion Forms
- Public Notices, Meeting Minutes, Resolution
- Transmittal Letters
- Certification Checklist

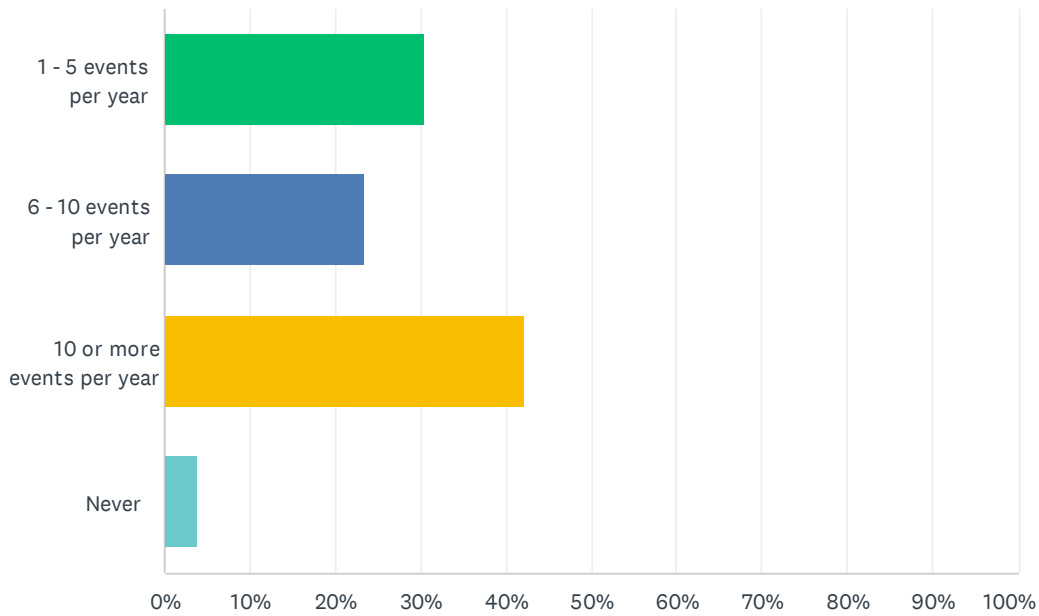
DRAFT

Survey Responses

DRAFT

Q1 How often do you or your family visit the parks in Swartz Creek?

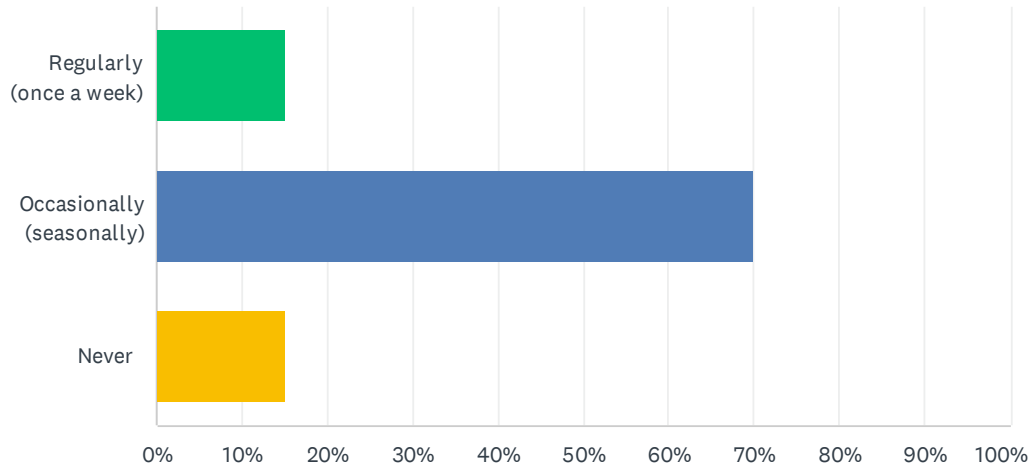
Answered: 154 Skipped: 1



ANSWER CHOICES	RESPONSES	
1 - 5 events per year	30.52%	47
6 - 10 events per year	23.38%	36
10 or more events per year	42.21%	65
Never	3.90%	6
TOTAL		154

Q2 How often do you participate in organized activities in parks within Swartz Creek?

Answered: 153 Skipped: 2



ANSWER CHOICES	RESPONSES	
Regularly (once a week)	15.03%	23
Occasionally (seasonally)	69.93%	107
Never	15.03%	23
TOTAL		153

Q3 Are there any specific park activities or equipment that you would suggest be added?

Answered: 120 Skipped: 35

ANSWER CHOICES	RESPONSES	
Elms Park	83.33%	100
Abrams Park	49.17%	59
Bicentennial Park	15.00%	18

Swartz Creek Five-Year Parks and Recreation Community Survey - 2022
Are there any specific park activities or equipment that you would suggest be added?

Answer Choices	Responses	
Elms Park	83.33%	100
Abrams Park	49.17%	59
Bicentennial Park	15.00%	18
Answered		120
Skipped		35

Respondent ID	Response Date	Elms Park	Abrams Park	Bicentennial Park
114081378500	Jul 25 2022 05:16 PM	Water Splash Pad		
114075841128	Jul 18 2022 09:14 PM		name change back to Winshall	
114075059994	Jul 17 2022 10:52 PM	Water park area like a splash pad would be awesome!		
114074846331	Jul 17 2022 09:23 AM	Splash pad, toddler play area		
114073553201	Jul 14 2022 07:19 PM	Volleyball court	Splash pad,another bathroom esp.by to,ddler play area	
114073472106	Jul 14 2022 05:13 PM	Splash pad		
114073381135	Jul 14 2022 03:09 PM	Splash Pad		
114073167059	Jul 14 2022 11:08 AM	Skate park	Skate park	Skate park
114072961232	Jul 14 2022 07:10 AM	Splash Pad	Splash Pad	Splash Pad
114072722258	Jul 13 2022 10:22 PM	Support youth football more	Parking	Where is this park?
114072675867	Jul 13 2022 08:50 PM	Walking trails	Walking trials	
114072624800	Jul 13 2022 07:23 PM	Splash pad		
114072503444	Jul 13 2022 04:25 PM	Splash pad, upgrades to play equipment	Upgrades to play equipment	
114072475133	Jul 13 2022 03:48 PM	Splash pad		
114072380108	Jul 13 2022 01:55 PM	Splash pad, paved walking paths	Paved walking paths, splash pad	
114072364276	Jul 13 2022 01:35 PM	Splash pad		
114072192068	Jul 13 2022 10:46 AM	extend roadway to connect both parking lots		
114071983783	Jul 13 2022 06:11 AM	Splash pad, hiking trail surrounding, more parking options	Splash pad, hiking trail along the creek side of park, double up baseball field and basketball court.	
114071885785	Jul 13 2022 03:30 AM	Splash Pad		
114071603023	Jul 12 2022 10:58 PM		More electricity	
114071585816	Jul 12 2022 10:21 PM	Splash pad/waterpark	Splash pad/waterpark	

114071580384	Jul 12 2022 10:11 PM	Splash pad	Hammock stands that hold many at a time
114071460663	Jul 12 2022 06:14 PM	Splash pad	
114071375436	Jul 12 2022 04:02 PM	Splash pad	
114071369753	Jul 12 2022 03:54 PM	Splash pad	Splash pad
			More sand toys, the digger in the sandbox is not working for the little ones. The metal slide near the lady bug could use a guard rail at the top.
114071308640	Jul 12 2022 02:32 PM		
114071279548	Jul 12 2022 01:55 PM	Parking and pavilions, food truck night	
114071270728	Jul 12 2022 01:44 PM	Splash pad, pool, ice rink, volley ball court	
114071213995	Jul 12 2022 12:31 PM	Additional small children swing in the smaller children area	Swings!
		Water at dog park area. And make a driveway to the park for handicap access. It is a long walk on uneven ground	
114071207817	Jul 12 2022 12:23 PM		
114071196271	Jul 12 2022 12:08 PM	water features!	
114071175736	Jul 12 2022 11:45 AM	Splash pad	Splash pad
114071168972	Jul 12 2022 11:38 AM	A splash pad	A splash pad
114071146785	Jul 12 2022 11:15 AM	Splash pad	Splash pad
114071141757	Jul 12 2022 11:09 AM	Splash pad	
114071080050	Jul 12 2022 10:00 AM	Splash pad, slip n slide, snow tubing	
114071066956	Jul 12 2022 09:45 AM	Splash Pad	
114071049816	Jul 12 2022 09:29 AM	Community pool, Splash pad or similar	
114071038467	Jul 12 2022 09:20 AM	Splash Pad	Updated playscape, clean tennis courts
114070984583	Jul 12 2022 08:14 AM		Splash Pad!
114070962864	Jul 12 2022 07:36 AM	Splash pad	
114070922808	Jul 12 2022 06:11 AM	Splashpad	
114070863505	Jul 12 2022 03:54 AM	Splash Pad	
114070837955	Jul 12 2022 02:52 AM	Splash Pad	Updated basketball hoods/court, play equipment for older children
114070796180	Jul 12 2022 12:40 AM	Splash pad, more infant/toddler related items	

114070788879	Jul 12 2022 12:13 AM	Splash Pad			
114070788623	Jul 12 2022 12:12 AM	Splash pad			
114070783955	Jul 11 2022 11:56 PM	Splash pad			
114070775802	Jul 11 2022 11:30 PM		Splash Pad		
114070767831	Jul 11 2022 11:05 PM	Trees in dog park			Pool
114070763922	Jul 11 2022 10:54 PM	Splash pad			
114070760534	Jul 11 2022 10:45 PM		Splash pad		
114070748261	Jul 11 2022 10:13 PM	Community pool			
114070740318	Jul 11 2022 09:53 PM	Splash pad			
114070732444	Jul 11 2022 09:34 PM	Splash pad			
114070730716	Jul 11 2022 09:29 PM	More dual swings for toddler and parent	More dual swings for toddler and parent		
114070728503	Jul 11 2022 09:24 PM	Splash pad			
114070725959	Jul 11 2022 09:18 PM	Splash pad			
114070725275	Jul 11 2022 09:16 PM		Splash Pad		
114070724849	Jul 11 2022 09:15 PM	Upgrade...the mulch, repairs, paint			
114070715640	Jul 11 2022 08:54 PM	Splash pad	Fishing pond		
114070715322	Jul 11 2022 08:53 PM	Splash pad	Splash pad		
114070710403	Jul 11 2022 08:42 PM	Equipment for exercise and walking path and stuff for teenager	Toddler play place things for teenager		Walking path
114070707329	Jul 11 2022 08:35 PM	Pool	Pool		Pool, disk golf, 7' basketball hoop for younger kids
114070704344	Jul 11 2022 08:29 PM	Splash pad	Splash pad		Splash pad
114070699569	Jul 11 2022 08:19 PM	Pond for fishing and ice skating, a splash pad, more pavilions in the back, a revamped baseball diamond for use by the public & youth baseball, or a whiffleball stadium, more trees.	Dog park in old tennis court, a bathroom near the newer play area		I don't even know where this is
114070696479	Jul 11 2022 08:13 PM		Lawn bowling, something new to try		
114070695527	Jul 11 2022 08:11 PM	Splash pad	Splash pad		Splash pad
114070695620	Jul 11 2022 08:11 PM		Splash pad		
114070695198	Jul 11 2022 08:10 PM	Splash pad			
114070694660	Jul 11 2022 08:09 PM	Splash pad			
114070693212	Jul 11 2022 08:06 PM	Splash pad			
114070691747	Jul 11 2022 08:03 PM	Splash pad!	Splash pad!		Splash pad!

114070688887	Jul 11 2022 07:57 PM	Splash pad	Splash pad	
114070686686	Jul 11 2022 07:52 PM	Splashpad		
114070683877	Jul 11 2022 07:46 PM	Splash pad		
114070682922	Jul 11 2022 07:44 PM	Splash pad		
114070681283	Jul 11 2022 07:41 PM	Updated baseball fields	Updated baseball fields	
114070675430	Jul 11 2022 07:30 PM	Splash pad	Splashpad	
114070673046	Jul 11 2022 07:25 PM	Splash pad		
114070672261	Jul 11 2022 07:24 PM	Splash Pad	Splash Pad	
114070668769	Jul 11 2022 07:18 PM	Splash Pad		
114070666450	Jul 11 2022 07:14 PM	Cameras to deter crime. A larger sledding hill.		
114070661421	Jul 11 2022 07:06 PM	Splash pad		
114070661573	Jul 11 2022 07:06 PM	Ice rink (official one) and splash pad for the littles.	More basketball courts	
114070658102	Jul 11 2022 07:00 PM	Water splash area for kids/ teens		
114070652674	Jul 11 2022 06:51 PM		Splash pad	
114070651861	Jul 11 2022 06:50 PM	Splash pad!		
114070648885	Jul 11 2022 06:45 PM	Splash pad	Splash pad	Splash pad
114070648769	Jul 11 2022 06:45 PM	Splash pad	More toys age specific towards toddlers	
114070648891	Jul 11 2022 06:45 PM			Didn't know this existed?
114070647200	Jul 11 2022 06:42 PM	Splash pad		
114070643085	Jul 11 2022 06:35 PM		Pool and splash pad remove the tennis	
114070634965	Jul 11 2022 06:23 PM	Splash pad		
114070632324	Jul 11 2022 06:19 PM	Splash pad!		
114070616886	Jul 11 2022 05:58 PM	Splash pad	Splash pad	
114070588236	Jul 11 2022 05:36 PM	Splash pad or water area of some sort		
114070192575	Jul 11 2022 09:15 AM	Out door Roller blading or roller skating	Out door roller blading or roller skating	
114069838133	Jul 10 2022 02:11 PM	Add another bathroom; canopy bench at dog park	Add another bathroom with baby changer by tot lot; landscape with trails	Pavilion with fireplace; landscape
114068904244	Jul 08 2022 11:30 AM	Pickle ball courts		
114067755597	Jul 06 2022 09:18 PM	Splash pad for kids!		
114067711436	Jul 06 2022 07:34 PM	Fishing pond	New playground	Isn't that in Grand Blanc

114066768462	Jul 05 2022 02:47 PM		Need to keep the magnificent trees in the park	
114064948708	Jul 01 2022 06:56 PM	Cops in the park		
114064720564	Jul 01 2022 11:52 AM		Change the name back to winshall	
114063889523	Jun 30 2022 12:01 PM	improve ball field		More picnic tables under the pavilion
114063610118	Jun 30 2022 06:19 AM		Update old fitness track and maintain tennis courts	
114063332589	Jun 29 2022 08:23 PM	Inclusive park access and structures	Inclusive park access and structures	Inclusive playground
		Add additional pavillions. Possibly invite food trucks for special events.	Upgrades to equipment for older kids. There are older swings, but a lot of the play equipment is for young children. More programmed events would be great!	
114063003280	Jun 29 2022 12:07 PM			
114062569268	Jun 28 2022 11:05 PM	Pool		
114062549084	Jun 28 2022 10:13 PM		Updated playground equipment by softball field	
114062537486	Jun 28 2022 09:47 PM		Walking path along the creek.	
114062457433	Jun 28 2022 07:12 PM		Please fix tennis courts	
114062456923	Jun 28 2022 07:11 PM	Trash cans		
114062423509	Jun 28 2022 06:08 PM	Pool	Splash pad	
114062386030	Jun 28 2022 05:04 PM		Restrooms	
114062379938	Jun 28 2022 04:54 PM	Splash pad		
114062337607	Jun 28 2022 03:53 PM		Trail	Firepit
114055375897	Jun 19 2022 10:44 AM	Pickleball courts		
		Skating/ice/roller benches for ice skating, maybe more advertising for winter activities	Tennis courts fixed	
114055371779	Jun 19 2022 10:26 AM			

Q4 What do you like most about the facilities in the parks?

Answered: 91 Skipped: 64

Swartz Creek Five-Year Parks and Recreation Community Survey - 2022

What do you like most about the facilities in the parks?

Answered 91
Skipped 64

Respondent ID	Response Date	Responses
114082593195	Jul 27 2022 08:36 AM	the variety
114075059994	Jul 17 2022 10:52 PM	They are clean and safe!
114074846331	Jul 17 2022 09:23 AM	Clean and safe
114073553201	Jul 14 2022 07:19 PM	Clean
114073472106	Jul 14 2022 05:13 PM	Clean
114073445704	Jul 14 2022 04:36 PM	Playgrounds and tennis courts
114073381135	Jul 14 2022 03:09 PM	The playgrounds
114073167059	Jul 14 2022 11:08 AM	Cleanliness
114072961232	Jul 14 2022 07:10 AM	My kids enjoy them! A splash pad would make it even better.
114072722258	Jul 13 2022 10:22 PM	Lots of room
114072712065	Jul 13 2022 10:00 PM	Toddler play space.
114072675867	Jul 13 2022 08:50 PM	Play areas for young kids
114072624800	Jul 13 2022 07:23 PM	Clean place for kids to play. Safe place to walk. Making memories with family in our home town. More activities to do would always be awesome
114072503444	Jul 13 2022 04:25 PM	for the kids I love the covered Pavillions, real bathroom facilities, and that the parks are well kept and safe.
114072380108	Jul 13 2022 01:55 PM	safe.
114072192068	Jul 13 2022 10:46 AM	Pokemon stops/gyms
114071983783	Jul 13 2022 06:11 AM	Everything is always clean
114071885785	Jul 13 2022 03:30 AM	Most are maintained well. Open, safe. Green space, lots of choices for different people, and love the new walking trail at Elms.
114071580384	Jul 12 2022 10:11 PM	Quality of equipment
114071460663	Jul 12 2022 06:14 PM	Most of them are clean, and the equipment is well taken care of
114071375436	Jul 12 2022 04:02 PM	Abrams park is perfect for my toddlers. It's so calm and peaceful with the beautiful shade trees. I also like that the playground is completely fenced in.
114071308640	Jul 12 2022 02:32 PM	Well maintained
114071279548	Jul 12 2022 01:55 PM	Creaminess, family oriented.
114071270728	Jul 12 2022 01:44 PM	My daughter likes to swing
114071213995	Jul 12 2022 12:31 PM	

114071207817	Jul 12 2022 12:23 PM	The dog park area
114071196271	Jul 12 2022 12:08 PM	accessibility to bathrooms and safety
114071175736	Jul 12 2022 11:45 AM	No comment
		I love that it engages our children to be outside, having conversations with friends, and engaged in the community
114071168972	Jul 12 2022 11:38 AM	The area is huge
114071080050	Jul 12 2022 10:00 AM	Centrally located in community
114071049816	Jul 12 2022 09:29 AM	Large play areas nice update kids playground at elms park bathhouse if needed
114071038467	Jul 12 2022 09:20 AM	They're clean, they're well maintained, they are fun.
114070984583	Jul 12 2022 08:14 AM	Close by and free
114070962864	Jul 12 2022 07:36 AM	Events at Elms Park
114070863505	Jul 12 2022 03:54 AM	Just the fact that we have them.
114070796180	Jul 12 2022 12:40 AM	Clean
114070788879	Jul 12 2022 12:13 AM	Playground
114070783955	Jul 11 2022 11:56 PM	Cleanliness
114070775802	Jul 11 2022 11:30 PM	Dog parks
114070767831	Jul 11 2022 11:05 PM	Clean
114070760534	Jul 11 2022 10:45 PM	Lots of shade, walking path is very nice, ballfield, tennis courts, basketball hoops, playground, and pavilions are lol very nice! We love the play area and splash pad at Bicentennial Park.
114070748261	Jul 11 2022 10:13 PM	The many things to do in the parks makes a great day for the family.
114070740318	Jul 11 2022 09:53 PM	Mostly enclosed and easy to keep children in play area
114070732444	Jul 11 2022 09:34 PM	We love the equipment at Elms Park, but it gets HOT for little ones playing outside! A splash pad would be a great addition to any one of the parks.
114070730716	Jul 11 2022 09:29 PM	Elms play scape, pavilions, available restrooms (need cleaning and soap to wash hands)
114070725275	Jul 11 2022 09:16 PM	New equipment
114070724849	Jul 11 2022 09:15 PM	Wish there was a splash pad splash pad in creek, park where crapo building is when it is torn down would be great. A splash pad there would be convenient to walk to restaurants
114070715640	Jul 11 2022 08:54 PM	Lots of amenities and for all age groups
114070715322	Jul 11 2022 08:53 PM	I like the dog run at elms but I mainly use Winshall. Wish we had one as well.
114070707329	Jul 11 2022 08:35 PM	
114070705654	Jul 11 2022 08:31 PM	

114070704344	Jul 11 2022 08:29 PM	I like the size and different heights. My son enjoys all the parks. I would Love do not have to use the gas to go to ground blank for a splash pad.
114070699569	Jul 11 2022 08:19 PM	I love the big shade trees at Elms Park, the new path that was just installed, and the pavilions.
114070696479	Jul 11 2022 08:13 PM	trees and walk on those sidewalks, picnics, for reunion and etc
114070696621	Jul 11 2022 08:13 PM	Verity of things to do, good amount of room.
114070695527	Jul 11 2022 08:11 PM	Playgrounds
114070695620	Jul 11 2022 08:11 PM	Clean and safe
114070695198	Jul 11 2022 08:10 PM	Sledding hill
114070694660	Jul 11 2022 08:09 PM	Nice open areas to take my kids to play and walk my dog.
114070688887	Jul 11 2022 07:57 PM	They are clean.
114070686686	Jul 11 2022 07:52 PM	Shady areas and nice playground
114070682922	Jul 11 2022 07:44 PM	Both of the fenced in play areas at elms are fun for most kids
114070675430	Jul 11 2022 07:30 PM	Very clean and usable for the children.
114070672261	Jul 11 2022 07:24 PM	Clean
114070666450	Jul 11 2022 07:14 PM	My kids used to use the playscape regularly. They are up to date and cleaned regularly. I would like to see more regular checks on Elms since it seems to have a higher attendance for cleanup.
114070661573	Jul 11 2022 07:06 PM	How clean they stay and how every gets along. Kids never get bored there no matter how long we stay. We also feel safe at all times.
114070661421	Jul 11 2022 07:06 PM	I like the playground, basketball court and pavilion at Elms Park
114070658102	Jul 11 2022 07:00 PM	Usually a good amount of parking spots
114070651861	Jul 11 2022 06:50 PM	Convenient
114070648769	Jul 11 2022 06:45 PM	Clean, well maintained, large
114070648885	Jul 11 2022 06:45 PM	Kept up and peaceful family setting
114070643085	Jul 11 2022 06:35 PM	Lots of trees, country settings.
114070634965	Jul 11 2022 06:23 PM	Up kept equipment
114070632324	Jul 11 2022 06:19 PM	Fun place to take my grandson
114070616886	Jul 11 2022 05:58 PM	Elms park is nicely shaded all summer
114070588236	Jul 11 2022 05:36 PM	The fact we have a safe place to enjoy the company of friends and family.
114070192575	Jul 11 2022 09:15 AM	Gathering of family; walking
114069838133	Jul 10 2022 02:11 PM	Clean and kept up well
114068904244	Jul 08 2022 11:30 AM	

114067755597	Jul 06 2022 09:18 PM	Great for the kids.
114067711436	Jul 06 2022 07:34 PM	Close to Home
		The coolness of the shade provided by the trees
		at Abrams.
114066768462	Jul 05 2022 02:47 PM	Well kept Expect elms bathroom
114064720564	Jul 01 2022 11:52 AM	open space
114063889523	Jun 30 2022 12:01 PM	
		for the most part, I like that there are numerous
		amenities in the parks. This means that they are
		not used solely for a singular purpose.
114063003280	Jun 29 2022 12:07 PM	
		Kid friendly and good for family functions and
		community activities.
114062549084	Jun 28 2022 10:13 PM	Well maintained, close bathrooms,
114062456923	Jun 28 2022 07:11 PM	It's a large park. Spread out
114062379938	Jun 28 2022 04:54 PM	Trees and nature
114062337607	Jun 28 2022 03:53 PM	The pavilions
114055375897	Jun 19 2022 10:44 AM	Tennis courts
114055371779	Jun 19 2022 10:26 AM	Smooth parking lots for roller skating

Q5 What do you feel needs the most improvement in the parks? Please be specific as to which park.

Answered: 86 Skipped: 69

Swartz Creek Five-Year Parks and Recreation Community Survey - 2022

What do you feel needs the most improvement in the parks? Please be specific as to which park.

Answered 86

Skipped 69

Respondent ID	Response Date	Responses
114075841128	Jul 18 2022 09:14 PM	name change for Abrams Park ABRAMS needs tennis courts replaced or repaired. Volleyball ball court with sand would be nice
114073553201	Jul 14 2022 07:19 PM	nice
114073472106	Jul 14 2022 05:13 PM	Splash pad Swings at Abrams squeak Tennis courts at Abrams resurface
114073445704	Jul 14 2022 04:36 PM	
114073381135	Jul 14 2022 03:09 PM	Keeping them cleaned up
114072961232	Jul 14 2022 07:10 AM	Just keeping up on mowing and cleaning!
114072722258	Jul 13 2022 10:22 PM	Pave Elms park parking lot
114072712065	Jul 13 2022 10:00 PM	Elm's Park - Sandbox Play Area, up keep. Not enough places in Swartz Creek to walk in the park
114072675867	Jul 13 2022 08:50 PM	park
114072674703	Jul 13 2022 08:48 PM	Add a splash pad
114072624800	Jul 13 2022 07:23 PM	Safety
114072364276	Jul 13 2022 01:35 PM	Splash pad please!
114072192068	Jul 13 2022 10:46 AM	Elms needs to connect drive to other parking lot so you can drive all the way through. Abrams is very outdated , another restroom should be added to side with childrens park
114071983783	Jul 13 2022 06:11 AM	

114071885785	Jul 13 2022 03:30 AM	Don't know the name of it. The one in the neighborhood kind if behind the high school.
114071580384	Jul 12 2022 10:11 PM	When I went by there a couple weeks ago it was very unkempt. Tennis courts looked terrible, tall grass. Old.
114071460663	Jul 12 2022 06:14 PM	Basketball and tennis courts at Elms We need a splash pad!
114071375436	Jul 12 2022 04:02 PM	The bathrooms of elms park are always disgusting, and smell horrible Park
114071270728	Jul 12 2022 01:44 PM	Monitors, more garbage cans, restrooms Elms park Lots of garbage in the larger kids play area and could use more walking paths
114071213995	Jul 12 2022 12:31 PM	No comment
114071175736	Jul 12 2022 11:45 AM	I feel that Abrams park (which I live close to) is completely run down. The basketball court is broken, there are hardly anything for the big kids to play on.
114071168972	Jul 12 2022 11:38 AM	Elms road needs some type of supervision and trash pick up for the weekends. We see a lot of put if town kids enjoying our park, and it gets roudy (more than just kids playing) and a lot of trash gets left behind
114071146785	Jul 12 2022 11:15 AM	Elms Rd Park needs daily maintenance, there's always trash everywhere
114071080050	Jul 12 2022 10:00 AM	Abrams park- long grass, mosquitoes and ticks
114071049816	Jul 12 2022 09:29 AM	Elms Rd Park water issues near the hill or dog park hard to use services most of the wet season. Abrams park playscape and slides need updates as well as tennis courts need a major overhaul
114071038467	Jul 12 2022 09:20 AM	
114070984583	Jul 12 2022 08:14 AM	The clientele sometimes is concerning.

114070962864	Jul 12 2022 07:36 AM	Clean up crews. So much trash. My kids and I try to clean as much as possible when we visit. Working with people to clean up the park. We have gone several times as a family to clean up. We are willing to help organize days to help with all of the parks.9
114070863505	Jul 12 2022 03:54 AM	Abrams Park needs to update the basketball courts, or at the very least update the basketball hoops. The backboards with a spray painted square in them are not very appealing. Abrams Park would also benefit from adding playground equipment for older children as well. The equipment for smaller children is great, but older children are left out.
114070837955	Jul 12 2022 02:52 AM	Elms road park sometimes doesn't unlock the restrooms which is unfortunate
114070796180	Jul 12 2022 12:40 AM	Splash pad
114070788623	Jul 12 2022 12:12 AM	More things to do.
114070783955	Jul 11 2022 11:56 PM	More equipment for little ones, or add a splash pad to Abrams Park
114070775802	Jul 11 2022 11:30 PM	Elms - dog park lots of potential but just not on par with others in the area
114070767831	Jul 11 2022 11:05 PM	Improve parking at elms. I would suggest paving the driveway and expanding parking with lines to alleviate parking issue. Additional parking would also be appreciated
114070763922	Jul 11 2022 10:54 PM	Elms Rd park doesn't feel safe! Due to a safety concern this year, my teenager isn't allowed to go there.
114070755127	Jul 11 2022 10:30 PM	

114070748261	Jul 11 2022 10:13 PM	Cost to rent a pavilion needs to be implemented! Residents of Swartz Creek can't hardly ever use them
114070740318	Jul 11 2022 09:53 PM	Would love to see a handicap accessible playground at Elms rd.
114070732444	Jul 11 2022 09:34 PM	The roads in Elma park Need paved or just graded more often.
114070730716	Jul 11 2022 09:29 PM	Possibly more security. I've found condom wrappers at both Abrams and Elms parks this year.
114070715640	Jul 11 2022 08:54 PM	Elms park - new bathrooms
114070715322	Jul 11 2022 08:53 PM	Elms-splash pad, park where crapo building is
114070710403	Jul 11 2022 08:42 PM	Bathrooms Water for kids
114070704344	Jul 11 2022 08:29 PM	The city of Schwartz Creek has so many children and truly needs a splash pad The potholes at Elms Park are usually pretty terrible. Also, adding a second entrance (or dedicated exit and one way traffic) to the park would be pretty awesome...especially during football practices. I would also love to see more parks develop throughout the city. Perhaps a sports plex with ayso fields and multiple baseball diamonds.
114070699569	Jul 11 2022 08:19 PM	
114070696479	Jul 11 2022 08:13 PM	none at this time
114070696621	Jul 11 2022 08:13 PM	Abrams needs updates. tennis courts need some work. Basketball courts need some nets. Looks bad. Maybe paint the equipment
114070695620	Jul 11 2022 08:11 PM	Updates to volleyball courts, possibly spray for bugs and bees more
114070695527	Jul 11 2022 08:11 PM	More kid friendly equipment

114070694660	Jul 11 2022 08:09 PM	Elms rd park would be nice to add a splash pad and update some of the playground equipment and sandboxes. Would be nice to see some new playground equipment added at Abrams park for older kids instead of just the toddler area and old playground there.
114070691868	Jul 11 2022 08:03 PM	Elms park needs some security at times
114070688887	Jul 11 2022 07:57 PM	Both Abrams and elms road need maintenance at least once monthly fixing things such as wooden posts broken swings
114070686686	Jul 11 2022 07:52 PM	Something to keep them cool at Elms. Like a splashpad!
114070683877	Jul 11 2022 07:46 PM	Abrams park needs more love! It is a great space and would be a great asset to the community if given more attention.
114070682922	Jul 11 2022 07:44 PM	There is often a lot of trash at elms park and bathrooms are not always clean. The tennis court pavement could use repair
114070681283	Jul 11 2022 07:41 PM	Update baseball fields and have them groomed and taken care of.
114070675430	Jul 11 2022 07:30 PM	Abrams park needs more play on equipment.
114070672261	Jul 11 2022 07:24 PM	Cameras
114070668769	Jul 11 2022 07:18 PM	Parking lot and wood play scape at elms road.
114070658102	Jul 11 2022 07:00 PM	Elms park needs improved restrooms, something for summer time such as a water splash area and the basketball court lines redone.
114070648885	Jul 11 2022 06:45 PM	Splash pad

		Abrams needs an update and could use more playscapes. Specifically towards toddlers so the playscapes would be lower to the ground and soft ground.
114070648769	Jul 11 2022 06:45 PM	I'd like to see a splash pad at elms park and also in the winter, an ice rink possibly with boards and more up keep.
114070647200	Jul 11 2022 06:42 PM	People throwing trash everywhere all the time
114070643085	Jul 11 2022 06:35 PM	Abrams park needs a pool and splash pad
114070632324	Jul 11 2022 06:19 PM	Garbage pick up in Elms I would love to see a splash pad at one of the parks. My kids are grown and gone, but I could still enjoy that with grand kids someday. Also, I would love it if Swartz Creek had hiking trails. I would do that regularly!
114070619420	Jul 11 2022 06:01 PM	We need a splash pad or water area of some sort. Grand blanc one is nice but one on creek would get so much use!
114070588236	Jul 11 2022 05:36 PM	Bicentennial park needs cleaned up. The city does pull weeds or trim the trees and plants.
114070192575	Jul 11 2022 09:15 AM	Roses look awful. Bathrooms (Elms and Abrams); landscaping and walking pathways (Abrams)
114069838133	Jul 10 2022 02:11 PM	Abrams. Tennis court
114068904244	Jul 08 2022 11:30 AM	I don't not recall any at this time.
114067755597	Jul 06 2022 09:18 PM	Bathrooms are awful
114064948708	Jul 01 2022 06:56 PM	
114064720564	Jul 01 2022 11:52 AM	Abram's shouldn't have been changed names
114063889523	Jun 30 2022 12:01 PM	electricity in Abrams park pavilions
114063332589	Jun 29 2022 08:23 PM	Mowing! Especially at Elms Rd Park and Abrams

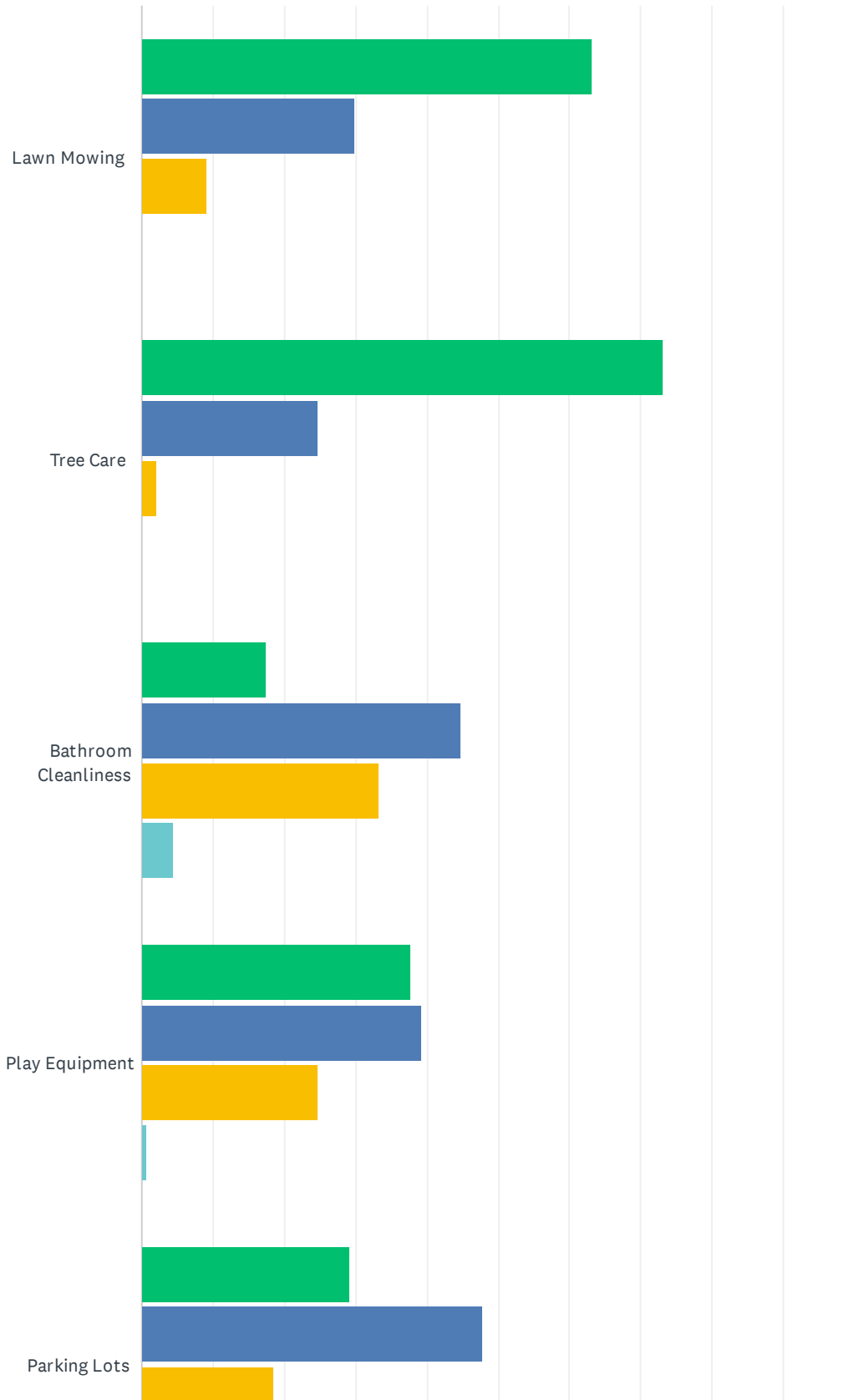
		I would love to see more programmed activities in all the parks. Could the park partner with For-Mar on the road or other groups to bring educational and fun programming? The Food Bank and GCCARD also have summer lunch programs in parks. These are things beyond planned athletic activities. I really want to see the trail system expansion continue between the parks. I would love to see some natural area enhancements in Abrams park, such as informational signage about the creek and wildlife, etc. Also with Abrams Park, add seating in the more woodsy areas. The creek is a cool asset to Abrams park and is underutilized. Additional seating throughout Elms Park would be nice too.
114063003280	Jun 29 2022 12:07 PM	
114062549084	Jun 28 2022 10:13 PM	Playground equipment at Abrams Park by ball diamond. It's very old and in poor condition. Something needs to be done with the tennis court at Abrams.
114062537486	Jun 28 2022 09:47 PM	Parental supervision! Younger kids are over run by preteens!
114062456923	Jun 28 2022 07:11 PM	Lighting. More seating.
114062423509	Jun 28 2022 06:08 PM	
		There needs to be another exit/entrance to elms road park. Maybe if that isn't possible a sign that lets people know that you can exit out the back. It gets crazy when youth football is going on .
114062409085	Jun 28 2022 05:43 PM	The play escape area. Lots of blind spots for parents. Can loose track of kids quickly.
114062379938	Jun 28 2022 04:54 PM	Designed poorly
114062337607	Jun 28 2022 03:53 PM	Trash collection

114055375897 Jun 19 2022 10:44 AM
114055371779 Jun 19 2022 10:26 AM

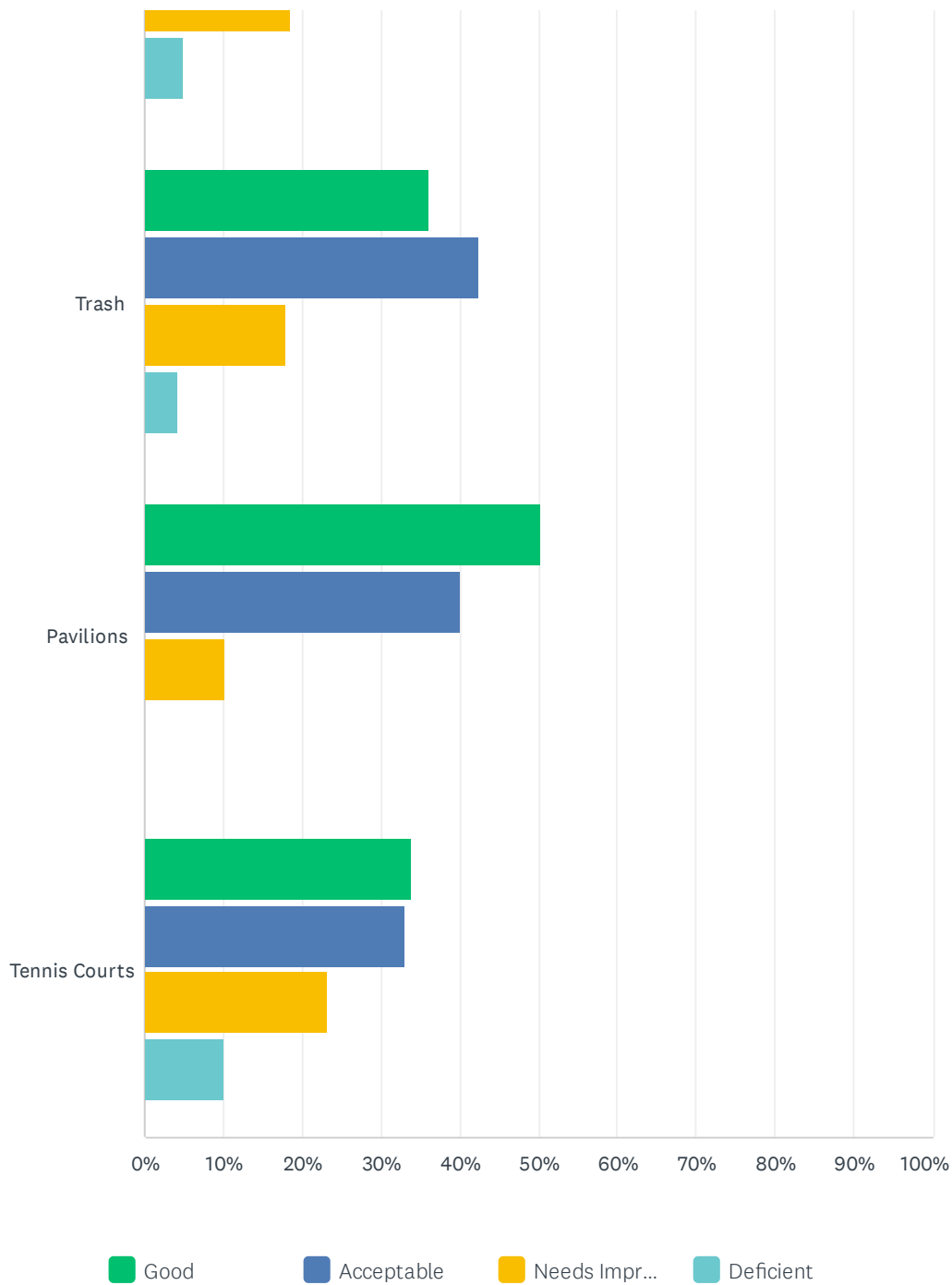
Elms park tennis courts need repairs
More planned events by the city

Q6 Do you feel there are any problems with the maintenance of the parks?

Answered: 145 Skipped: 10



Swartz Creek Five-Year Parks and Recreation Community Survey - 2022

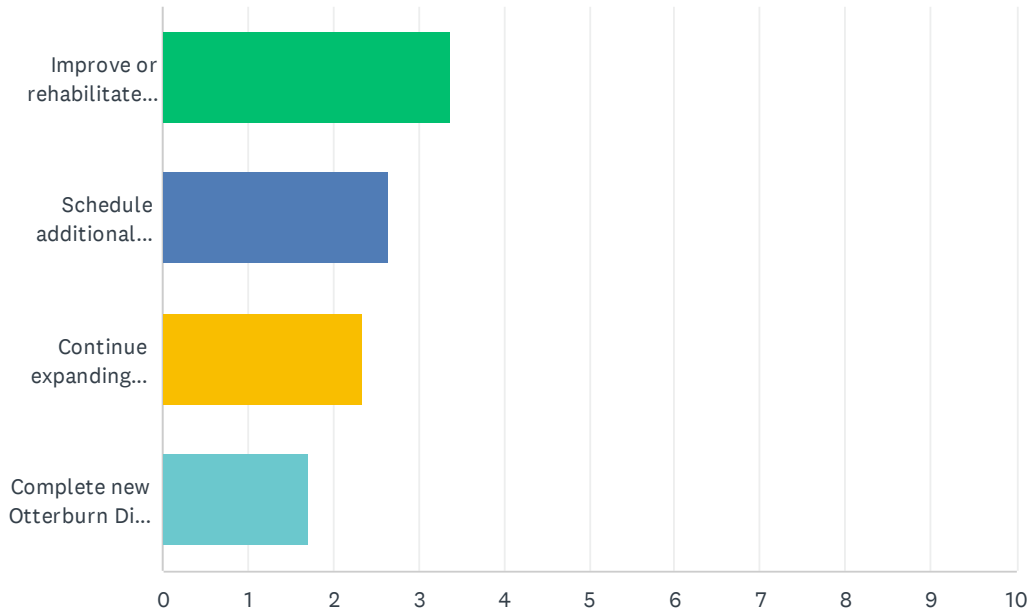


Swartz Creek Five-Year Parks and Recreation Community Survey - 2022

	GOOD	ACCEPTABLE	NEEDS IMPROVEMENT	DEFICIENT	TOTAL RESPONDENTS
Lawn Mowing	63.12% 89	29.79% 42	9.22% 13	0.00% 0	141
Tree Care	73.24% 104	24.65% 35	2.11% 3	0.00% 0	142
Bathroom Cleanliness	17.42% 23	44.70% 59	33.33% 44	4.55% 6	132
Play Equipment	37.68% 52	39.13% 54	24.64% 34	0.72% 1	138
Parking Lots	29.29% 41	47.86% 67	18.57% 26	5.00% 7	140
Trash	35.97% 50	42.45% 59	17.99% 25	4.32% 6	139
Pavilions	50.36% 69	40.15% 55	10.22% 14	0.00% 0	137
Tennis Courts	33.88% 41	33.06% 40	23.14% 28	9.92% 12	121

Q7 Rank your priority for use of budgeted funding, from 1 being the highest priority to 4 being the lowest priority.

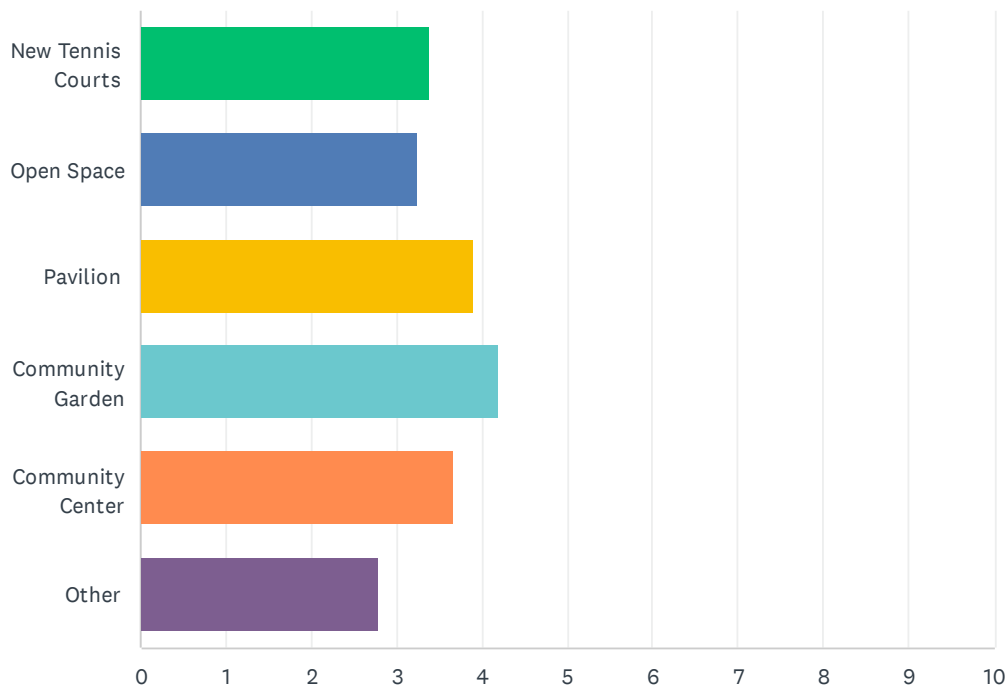
Answered: 146 Skipped: 9



	1	2	3	4	TOTAL	SCORE
Improve or rehabilitate existing facilities	56.03% 79	27.66% 39	13.48% 19	2.84% 4	141	3.37
Schedule additional activities at existing parks	21.28% 30	38.30% 54	24.82% 35	15.60% 22	141	2.65
Continue expanding non-motorized trail system	16.20% 23	21.13% 30	42.96% 61	19.72% 28	142	2.34
Complete new Otterburn Disc Golf Park (new Park on Bristol Road)	9.03% 13	12.50% 18	18.06% 26	60.42% 87	144	1.70

Q8 Rank the following suggested uses for the current tennis courts in Abrams Park, from 1 being most desirable to 6 being least desirable.

Answered: 134 Skipped: 21



	1	2	3	4	5	6	TOTAL	SCORE
New Tennis Courts	20.00% 26	12.31% 16	11.54% 15	18.46% 24	17.69% 23	20.00% 26	130	3.38
Open Space	5.51% 7	13.39% 17	23.62% 30	23.62% 30	24.41% 31	9.45% 12	127	3.24
Pavilion	13.28% 17	21.09% 27	25.00% 32	27.34% 35	10.16% 13	3.13% 4	128	3.91
Community Garden	21.21% 28	27.27% 36	22.73% 30	12.88% 17	11.36% 15	4.55% 6	132	4.20
Community Center	17.69% 23	23.08% 30	12.31% 16	13.85% 18	21.54% 28	11.54% 15	130	3.67
Other	26.05% 31	3.36% 4	5.04% 6	4.20% 5	11.76% 14	49.58% 59	119	2.79

Q9 If you chose "other" for question 8, what are some suggestions for the use of the existing tennis court?

Answered: 63 Skipped: 92

Swartz Creek Five-Year Parks and Recreation Community Survey - 2022

If you chose "other" for question 8, what are some suggestions for the use of the existing tennis court?

Answered 63

Skipped 92

Respondent ID	Response Date	Responses
114074846331	Jul 17 2022 09:23 AM	Splash pad
114073553201	Jul 14 2022 07:19 PM	Volleyball courts
114073381135	Jul 14 2022 03:09 PM	Splash pad
114073167059	Jul 14 2022 11:08 AM	Skate park for skate boarding, Rollerblade,scooters,etc.
114072961232	Jul 14 2022 07:10 AM	Splash Pad
114072712065	Jul 13 2022 10:00 PM	Outdoor activities - Pickleball.
114072674703	Jul 13 2022 08:48 PM	Splash pad
114072624800	Jul 13 2022 07:23 PM	Not familiar with Abrams Park Soccer, gymnastics, splash pad,
114072503444	Jul 13 2022 04:25 PM	community garden
114072380108	Jul 13 2022 01:55 PM	Splash pad area
114071983783	Jul 13 2022 06:11 AM	Splash pad/small water park
114071375436	Jul 12 2022 04:02 PM	Splash pad
114071369753	Jul 12 2022 03:54 PM	Splash pad
114071333735	Jul 12 2022 03:04 PM	Splash pad
114071308640	Jul 12 2022 02:32 PM	A splash pad for the summer would be great.
114071279548	Jul 12 2022 01:55 PM	Volleyball court
114071175736	Jul 12 2022 11:45 AM	Splash pad
114071168972	Jul 12 2022 11:38 AM	If not a tennis court, I would love to see a splash pad there!
114071146785	Jul 12 2022 11:15 AM	Splash pad
114071141757	Jul 12 2022 11:09 AM	Splash pad
114070984583	Jul 12 2022 08:14 AM	Splash Pad

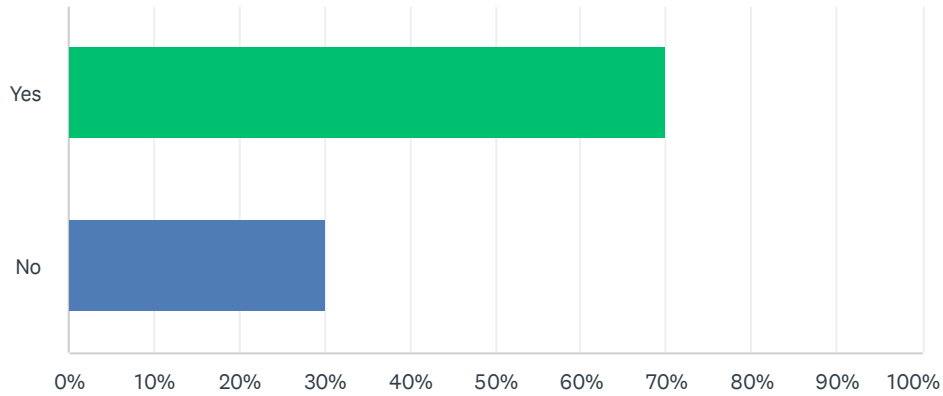
114070837955	Jul 12 2022 02:52 AM	Splash Pad
114070796180	Jul 12 2022 12:40 AM	Splash pad
114070775802	Jul 11 2022 11:30 PM	Splash Pad! Please
114070760534	Jul 11 2022 10:45 PM	Splash pad
114070751195	Jul 11 2022 10:21 PM	Splash pad
114070732444	Jul 11 2022 09:34 PM	Roller hockey with nets and side boards
114070730716	Jul 11 2022 09:29 PM	Splash pad would be nice
114070725275	Jul 11 2022 09:16 PM	Splash pad
114070707329	Jul 11 2022 08:35 PM	Community pool or splash pad
114070704952	Jul 11 2022 08:30 PM	Splash pad
114070704344	Jul 11 2022 08:29 PM	Splash pad!!!
		I think it would make a great dog park. It's already enclosed, away from the play areas, and would be a great asset to that area of town. Plus it would be easily expandable if needed.
114070699569	Jul 11 2022 08:19 PM	
114070696479	Jul 11 2022 08:13 PM	no comment
114070695620	Jul 11 2022 08:11 PM	Splash pad water park
114070695527	Jul 11 2022 08:11 PM	Splash pad
114070693212	Jul 11 2022 08:06 PM	Splash pad
114070688887	Jul 11 2022 07:57 PM	Splash pad or rollerblading hockey rink
114070682922	Jul 11 2022 07:44 PM	Fix tennis courts and add splash pad somewhere.
114070681283	Jul 11 2022 07:41 PM	Baseball fields
114070675430	Jul 11 2022 07:30 PM	Splash pad!!!!
114070666450	Jul 11 2022 07:14 PM	Splash pad

114070648885	Jul 11 2022 06:45 PM	Splash pad, I don't see tennis courts being used very often. I think a splash pad would be more popular
114070648769	Jul 11 2022 06:45 PM	Splash pad
114070643085	Jul 11 2022 06:35 PM	Pool and splash pad
114070632324	Jul 11 2022 06:19 PM	Splash pad
114070619420	Jul 11 2022 06:01 PM	Possibly an area for skating (like roller skating).
114070616886	Jul 11 2022 05:58 PM	Splash pad for the kids
114070588236	Jul 11 2022 05:36 PM	Water area or splash pad at any park please :)
114070192575	Jul 11 2022 09:15 AM	Add roller balding or roller skating area
114069838133	Jul 10 2022 02:11 PM	Large gazebo for events
114068904244	Jul 08 2022 11:30 AM	Pickle ball courts not use tennis courts.
114067755597	Jul 06 2022 09:18 PM	Splash pad for kids!
114064720564	Jul 01 2022 11:52 AM	Change the name back and maybe people will use the park again
114063889523	Jun 30 2022 12:01 PM	Child ride around area. City to drive on. Teach about stop, yield , right turn. Safety
114063332589	Jun 29 2022 08:23 PM	Other kinds of sport courts
114063003280	Jun 29 2022 12:07 PM	Skate Park
114062549084	Jun 28 2022 10:13 PM	Splash pad area or skateboard park.
114062537486	Jun 28 2022 09:47 PM	Splash pad was mentioned recently on Winchester Village's Facebook page. That might be a good possibility.

114062423509	Jun 28 2022 06:08 PM	Other could be Gaga put. Horseshoe pits. Cornhole area
114062337607	Jun 28 2022 03:53 PM	Skatepark
		Pickleball. Put 4 courts in next to tennis courts at Elms Park. You can put up 6' fences around then
114055375897	Jun 19 2022 10:44 AM	M and maybe a net between the courts end to end
114055371779	Jun 19 2022 10:26 AM	Skating park

Q10 Would you like to see pocket parks (small lot, single purpose lots for gardens, gazebos, and reflection areas) developed in Swartz Creek?

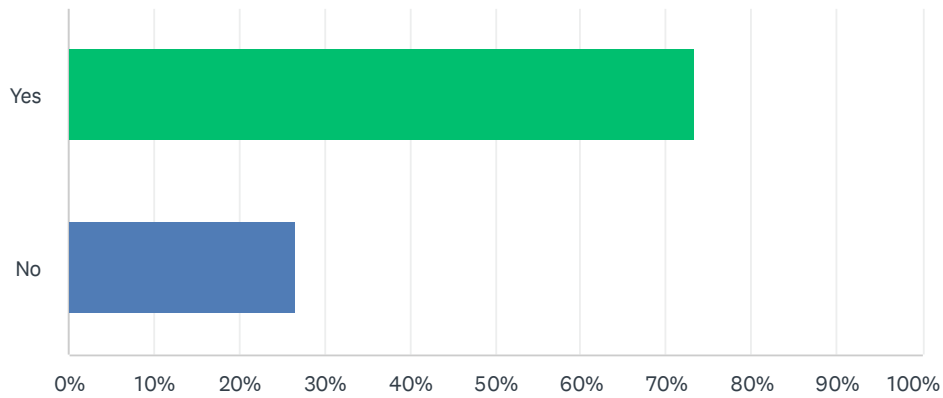
Answered: 150 Skipped: 5



ANSWER CHOICES	RESPONSES	
Yes	70.00%	105
No	30.00%	45
TOTAL		150

Q11 Are you a resident within the City of Swartz Creek?

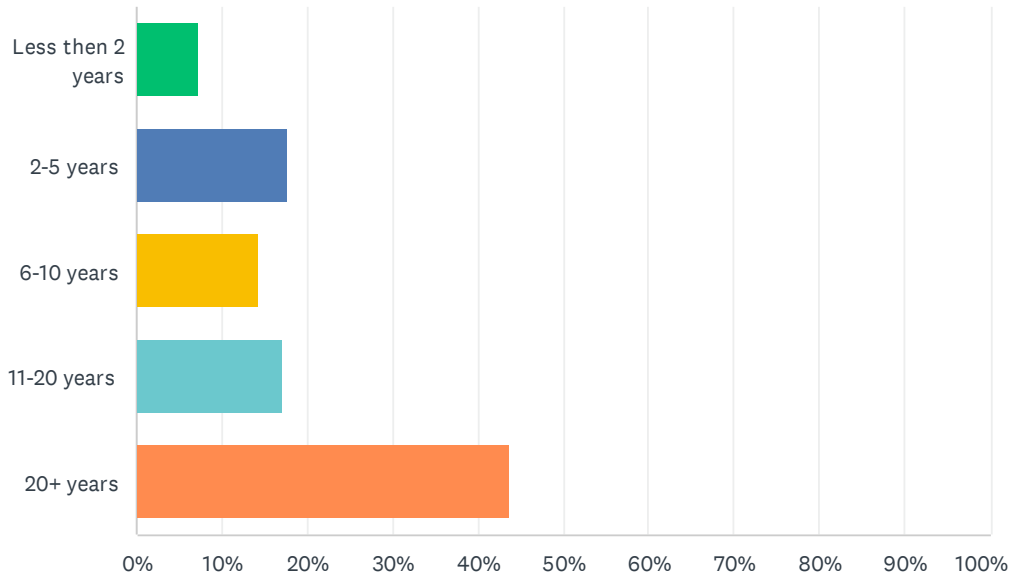
Answered: 154 Skipped: 1



ANSWER CHOICES	RESPONSES	
Yes	73.38%	113
No	26.62%	41
TOTAL		154

Q12 How long have you lived in the Swartz Creek area?

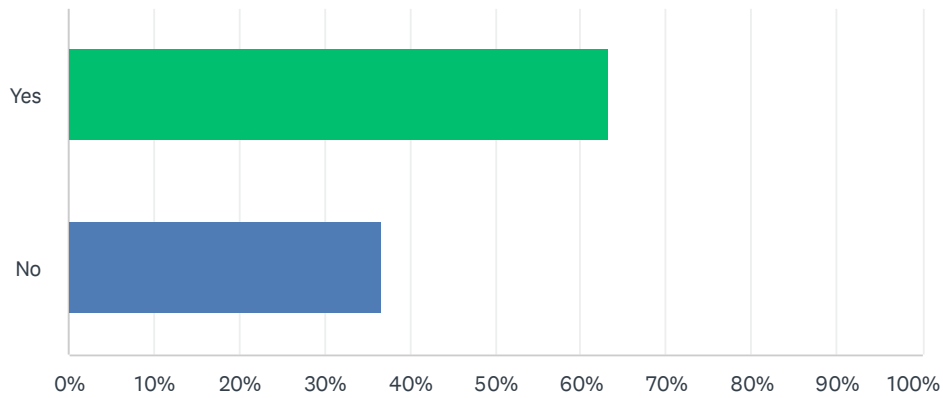
Answered: 153 Skipped: 2



ANSWER CHOICES	RESPONSES	
Less than 2 years	7.19%	11
2-5 years	17.65%	27
6-10 years	14.38%	22
11-20 years	16.99%	26
20+ years	43.79%	67
TOTAL		153

Q13 Do you have children that attend Swartz Creek Community Schools?

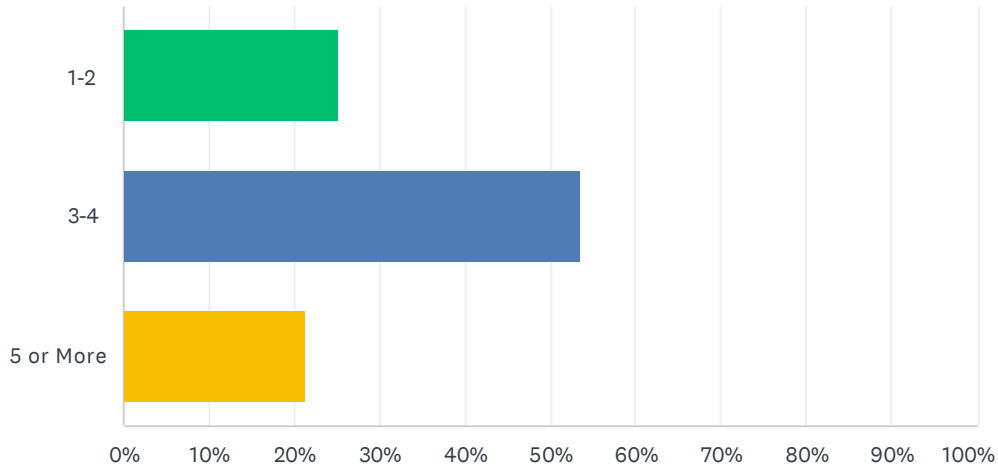
Answered: 155 Skipped: 0



ANSWER CHOICES	RESPONSES	
Yes	63.23%	98
No	36.77%	57
TOTAL		155

Q14 How many people are in your household?

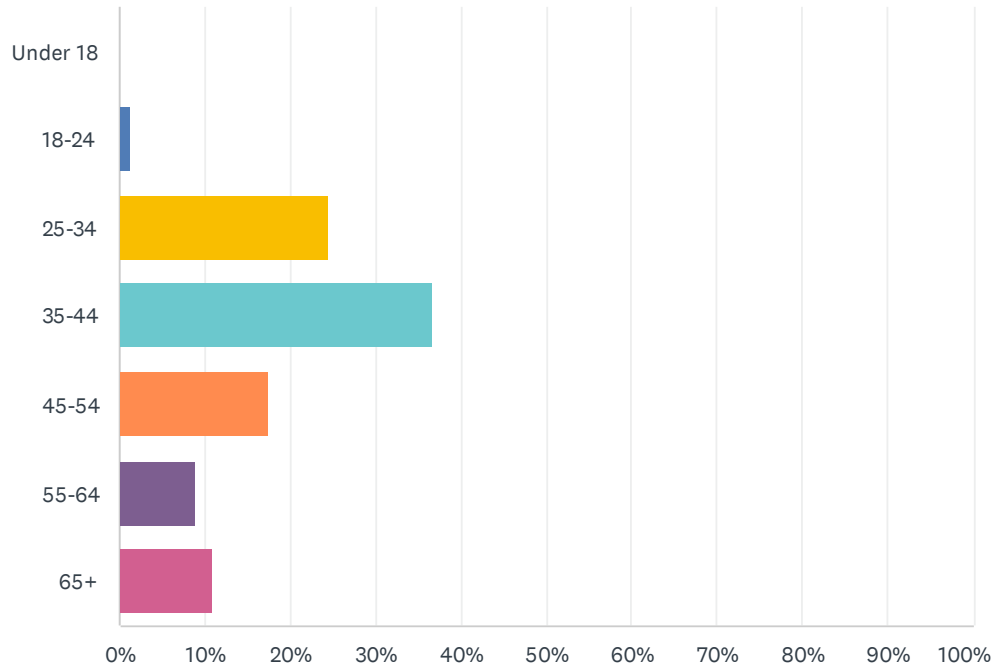
Answered: 155 Skipped: 0



ANSWER CHOICES	RESPONSES
1-2	25.16% 39
3-4	53.55% 83
5 or More	21.29% 33
TOTAL	155

Q15 What is your age?

Answered: 155 Skipped: 0

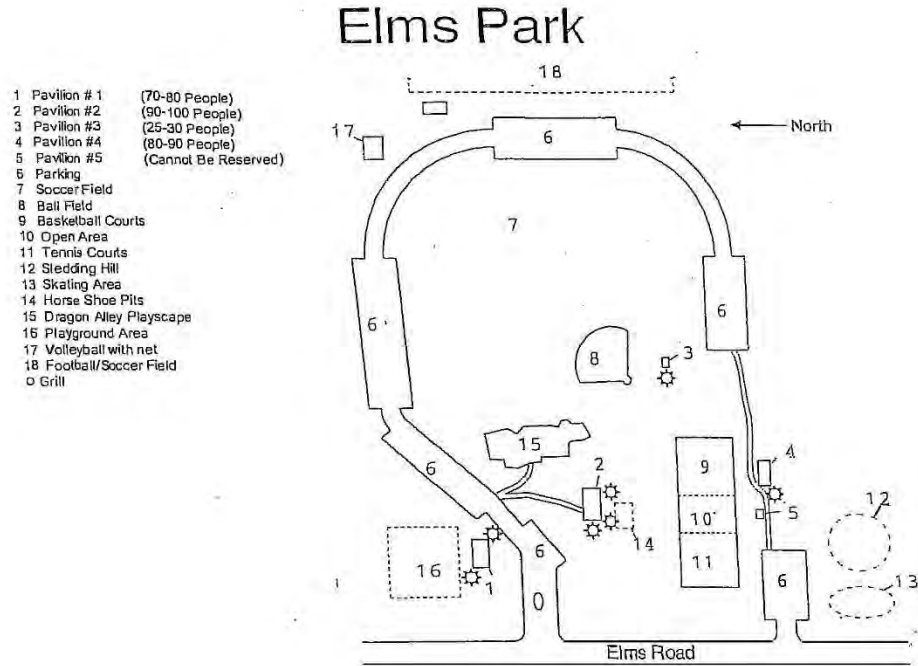


ANSWER CHOICES	RESPONSES	
Under 18	0.00%	0
18-24	1.29%	2
25-34	24.52%	38
35-44	36.77%	57
45-54	17.42%	27
55-64	9.03%	14
65+	10.97%	17
TOTAL		155

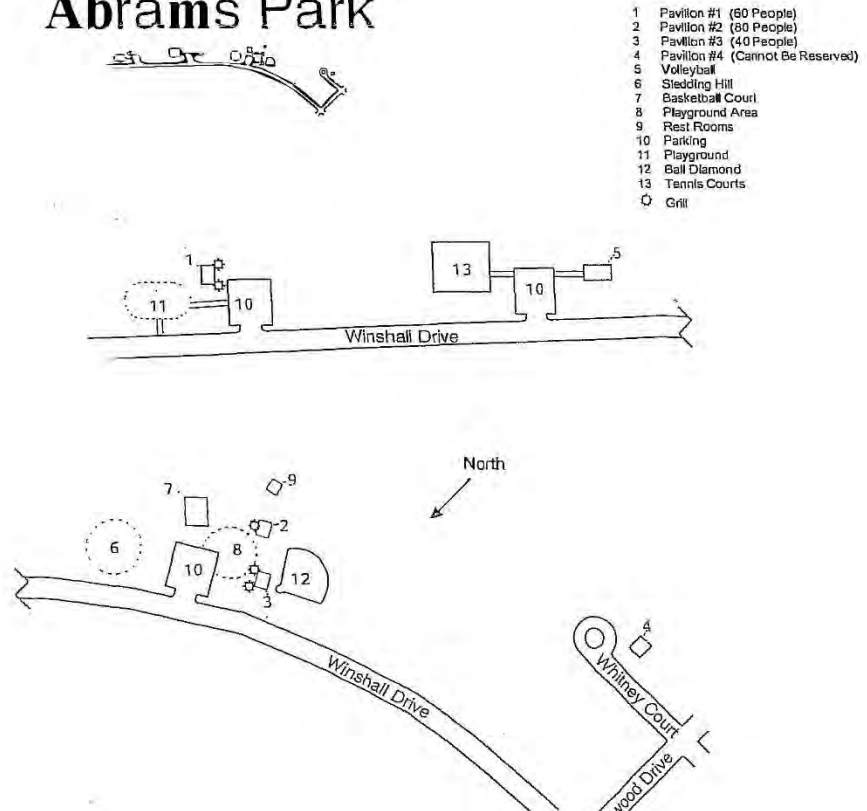
Budget

DRAFT

City Park Reservation Maps



Abrams Park



Post Completion Forms

DRAFT

Public Notices, Meeting Minutes and Resolution

DRAFT

City of Swartz Creek Recreation Plan Meeting Agenda Park Advisory Committee

May 4, 2022

1. Introductions
2. Review accomplishments since last plan. What's left?
3. Review of prior Goals and Objectives and Action Plan
-Mark up and revise as basis for presenting a draft at future public engagement
4. Public Engagement
 - A. Survey. Confirm questions. Issue asap. Suggest being consistent (city, community, etc). Open ended vs directed. How did responses from last survey direct action?
 1. What do you like most about recreation facilities in the Swartz Creek community?
 2. What do you like least about recreation facilities or opportunities in Swartz Creek?
 3. What changes would most improve recreation in the City of Swartz Creek?
 4. How often do you participate in activities in Swartz Creek parks?
 5. Let us know what you think about maintenance at Swartz Creek parks
-lawn mowing, tree care, bathrooms, play equipment, parking lots, trash, pavilions (acceptable or not)
 6. Do you believe that the parks add to quality of life and tourism / economy of a community?
 7. Please rank your priority for use of funding



- acquire additional property for parks, improve existing facilities, add new activities at existing parks, develop non-motorized trails

8. What is your age?

9. Are you a resident of the City of Swartz Creek?

10. **NEW** Name Bicentennial Park? Open ended or options? Prize/recognition for the winner? Promote for completing survey?

B. Focus Groups. Use to clarify key questions or items. Time and location, prior to Advisory Meeting?

<u>Organization</u>	<u>Topic</u>
---------------------	--------------

Winshall Neighborhood	
-----------------------	--

Pathway Committee	
-------------------	--

Lions Club	
------------	--

Others?	
---------	--

C. Town Hall Meeting. Discuss findings from focus groups and survey. Part of a council meeting? Part of issuing plan for 30 day review?

D. Other events our public engagement opportunities?

6. Items needed from city: budget, post completion forms, admin structure changes?

7. Comments, next steps

Swartz Creek Parks and Recreation Master Plan Focus Group Agenda

September 15, 2022

1. Introductions
2. Purpose of Parks and Recreation Master Plan – Submission End of 2022
3. Results from Survey
4. Review Goals and Objectives from Previous Plan (2018)
5. Discuss Improvements and Renovations to Existing Park Properties that are not addressed in previous plan
6. Next steps

Notes:



Transmittal Letters

DRAFT

Certification Checklist

DRAFT